

CLEC4A RABBIT PAB

Cat.#: S216465

Product Name: Anti-CLEC4A Rabbit Polyclonal Antibody

Synonyms: DCIR; LLIR; CD367; DDB27; CLECSF6; HDCGC13P

UNIPROT ID: Q9UMR7 (Gene Accession - BC117439)

Background: This gene encodes a member of the C-type lectin/C-type lectin-like domain (CTL/CTLD) superfamily. Members of this family share a common protein fold and have diverse functions, such as cell adhesion, cell-cell signalling, glycoprotein turnover, and roles in inflammation and immune response. The encoded type 2 transmembrane protein may play a role in inflammatory and immune response. Multiple transcript variants encoding distinct isoforms have been identified for this gene. This gene is closely linked to other CTL/CTLD superfamily members on chromosome 12p13 in the natural killer gene complex region.

Immunogen: Fusion protein of human CLEC4A

Applications: ELISA, WB, IHC

Recommended Dilutions: IHC: 200-400;WB: 200-1000;ELISA: 5000-10000

Host Species: Rabbit

Clonality: Rabbit Polyclonal

Isotype: Immunogen-specific rabbit IgG

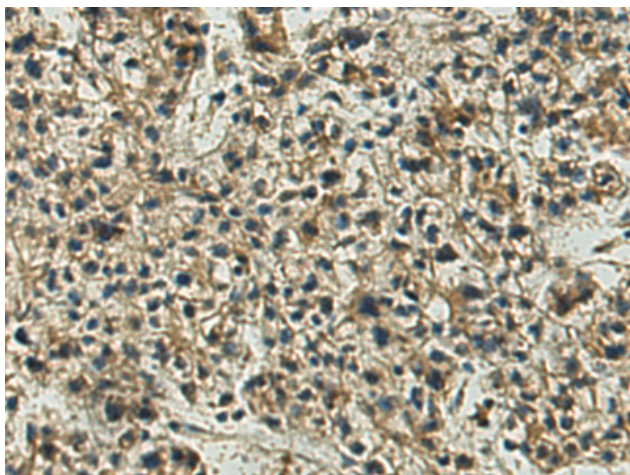
Purification: Antigen affinity purification

Species Reactivity: Human

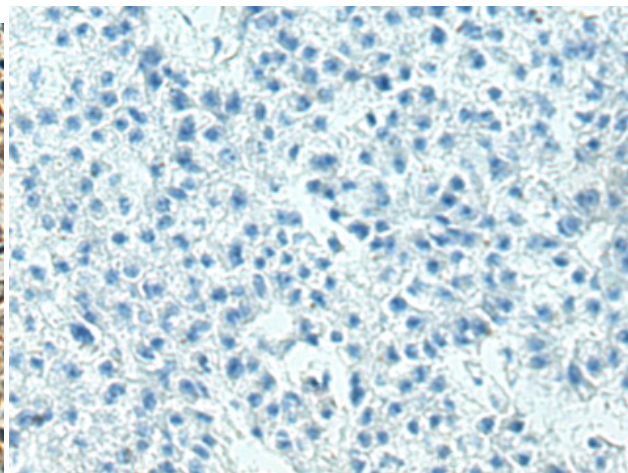
Constituents: PBS (without Mg²⁺ and Ca²⁺), pH 7.4, 150 mM NaCl, 0.05% Sodium Azide and 40% glycerol

Research Areas: Signal Transduction, Immunology

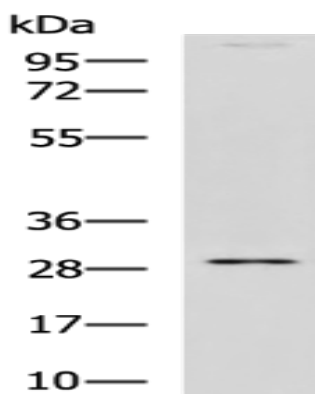
Storage & Shipping: Store at -20°C. Avoid repeated freezing and thawing



Immunohistochemistry analysis of paraffin embedded Human liver cancer tissue using 216465(CLEC4A Antibody) at a dilution of 1/200(Cytoplasm).



In comparison with the IHC on the left, the same paraffin-embedded Human liver cancer tissue is first treated with the fusion protein and then with 216465(Anti-CLEC4A Antibody) at dilution 1/200.



Gel: 8%SDS-PAGE, Lysate: 40 μ g;
Lane: BGC-823 cell lysate;
Primary antibody: 216465(CLEC4A Antibody)
at dilution 1/400;
Secondary antibody: HRP-conjugated Goat
anti rabbit IgG at 1/5000 dilution;
Exposure time: 1 minute