

## CLEC4C RABBIT PAB

**Cat.#:** S220153

**Product Name:** Anti-CLEC4C Rabbit Polyclonal Antibody

**Synonyms:** DLEC, HECL, BDCA2, CD303, CLECSF7, CLECSF11, PRO34150

**UNIPROT ID:** Q8WTT0 (Gene Accession - NP\_569708 )

**Background:** This gene encodes a member of the C-type lectin/C-type lectin-like domain (CTL/CTLD) superfamily. Members of this family share a common protein fold and have diverse functions, such as cell adhesion, cell-cell signalling, glycoprotein turnover, and roles in inflammation and immune response. The encoded type 2 transmembrane protein may play a role in dendritic cell function. Two transcript variants encoding distinct isoforms have been identified for this gene.

**Immunogen:** Synthetic peptide of human CLEC4C

**Applications:** ELISA, IHC

**Recommended Dilutions:** IHC: 50-100; ELISA: 2000-10000

**Host Species:** Rabbit

**Clonality:** Rabbit Polyclonal

**Isotype:** Immunogen-specific rabbit IgG

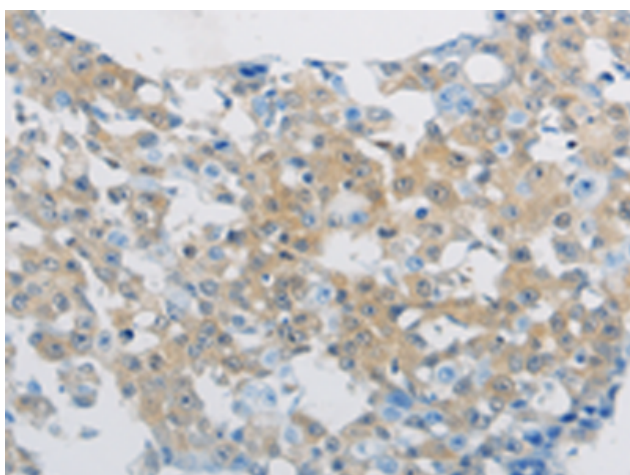
**Purification:** Antigen affinity purification

**Species Reactivity:** Human

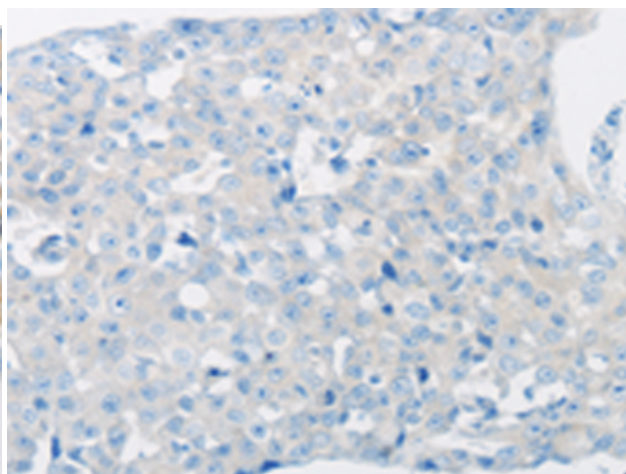
**Constituents:** PBS (without Mg<sup>2+</sup> and Ca<sup>2+</sup>), pH 7.4, 150 mM NaCl, 0.05% Sodium Azide and 40% glycerol

**Research Areas:** Immunology

**Storage & Shipping:** Store at -20°C. Avoid repeated freezing and thawing



Immunohistochemistry analysis of paraffin embedded Human breast cancer tissue using 220153(CLEC4C Antibody) at a dilution of 1/70(Cytoplasm).



In comparison with the IHC on the left, the same paraffin-embedded Human breast cancer tissue is first treated with the synthetic peptide and then with 220153(Anti-CLEC4C Antibody) at dilution 1/70.