

CLEC4D RABBIT PAB

Cat.#: S216429

Product Name: Anti-CLEC4D Rabbit Polyclonal Antibody

Synonyms: MCL; MPCL; CD368; CLEC6; CLEC-6; CLECSF8; Dectin-3

UNIPROT ID: Q8WXI8 (Gene Accession - BC032313)

Background: This gene encodes a member of the C-type lectin/C-type lectin-like domain (CTL/CTLD) superfamily. Members of this family share a common protein fold and have diverse functions, such as cell adhesion, cell-cell signalling, glycoprotein turnover, and roles in inflammation and immune response. This gene is closely linked to other CTL/CTLD superfamily members on chromosome 12p13 in the natural killer gene complex region.

Immunogen: Fusion protein of human CLEC4D

Applications: ELISA, WB, IHC

Recommended Dilutions: IHC: 50-300;WB: 500-2000;ELISA: 5000-10000

Host Species: Rabbit

Clonality: Rabbit Polyclonal

Isotype: Immunogen-specific rabbit IgG

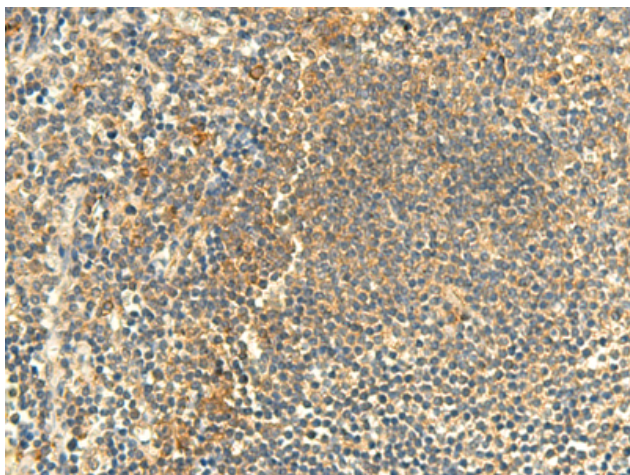
Purification: Antigen affinity purification

Species Reactivity: Human

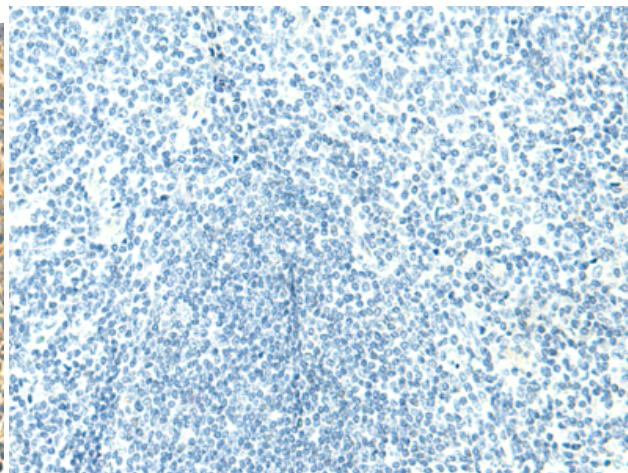
Constituents: PBS (without Mg²⁺ and Ca²⁺), pH 7.4, 150 mM NaCl, 0.05% Sodium Azide and 40% glycerol

Research Areas: Immunology

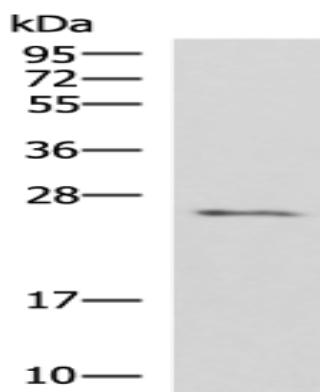
Storage & Shipping: Store at -20°C. Avoid repeated freezing and thawing



Immunohistochemistry analysis of paraffin embedded Human tonsil tissue using 216429(CLEC4D Antibody) at a dilution of 1/50(Cytoplasm).



In comparison with the IHC on the left, the same paraffin-embedded Human tonsil tissue is first treated with the fusion protein and then with 216429(Anti-CLEC4D Antibody) at dilution 1/50.



Gel: 12%SDS-PAGE, Lysate: 40 μ g;
Lane: Human fetal brain tissue lysate;
Primary antibody: 216429(CLEC4D Antibody)
at dilution 1/700;
Secondary antibody: HRP-conjugated Goat
anti rabbit IgG at 1/5000 dilution;
Exposure time: 6 minutes