

## CLEC7A RABBIT PAB

**Cat.#:** S216404

**Product Name:** Anti-CLEC7A Rabbit Polyclonal Antibody

**Synonyms:** BGR; CD369; CANDF4; SCARE2; DECTINI; CLECSF12

**UNIPROT ID:** Q9BXN2 (Gene Accession - BC013385 )

**Background:** This gene encodes a member of the C-type lectin/C-type lectin-like domain (CTL/CTLD) superfamily. The encoded glycoprotein is a small type II membrane receptor with an extracellular C-type lectin-like domain fold and a cytoplasmic domain with an immunoreceptor tyrosine-based activation motif. It functions as a pattern-recognition receptor that recognizes a variety of beta-1,3-linked and beta-1,6-linked glucans from fungi and plants, and in this way plays a role in innate immune response. Alternate transcriptional splice variants, encoding different isoforms, have been characterized. This gene is closely linked to other CTL/CTLD superfamily members on chromosome 12p13 in the natural killer gene complex region.

**Immunogen:** Fusion protein of human CLEC7A

**Applications:** ELISA, WB, IHC

**Recommended Dilutions:** IHC: 50-200;WB: 200-1000;ELISA: 5000-10000

**Host Species:** Rabbit

**Clonality:** Rabbit Polyclonal

**Isotype:** Immunogen-specific rabbit IgG

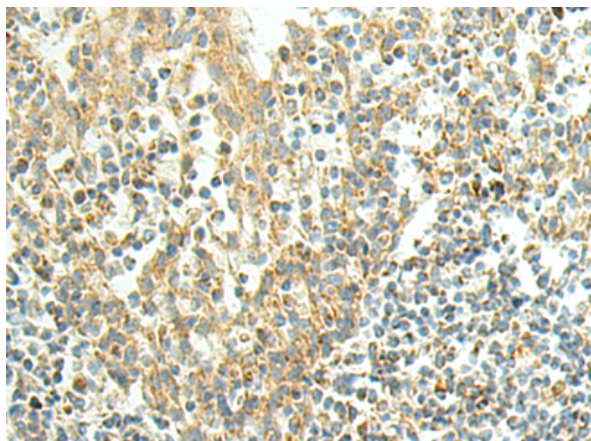
**Purification:** Antigen affinity purification

**Species Reactivity:** Human

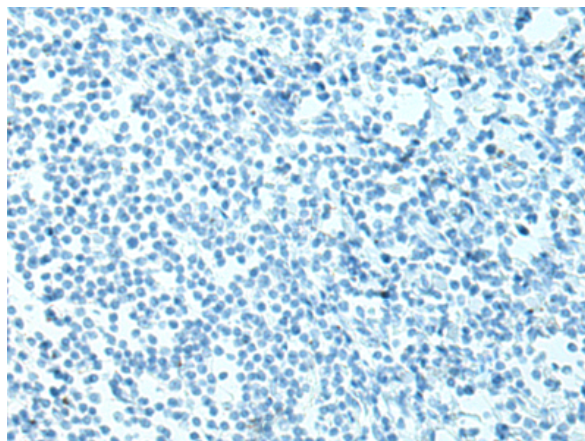
**Constituents:** PBS (without Mg<sup>2+</sup> and Ca<sup>2+</sup>), pH 7.4, 150 mM NaCl, 0.05% Sodium Azide and 40% glycerol

**Research Areas:** Immunology

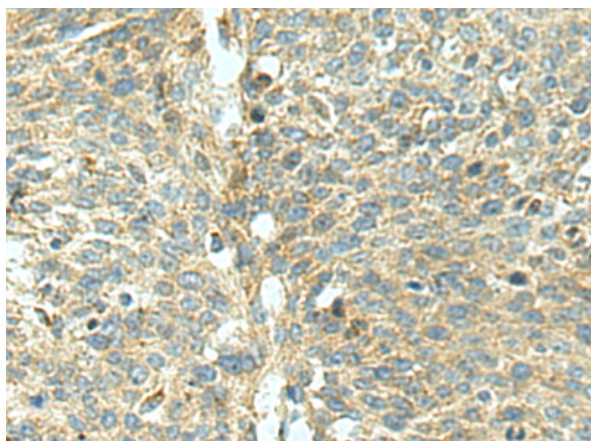
**Storage & Shipping:** Store at -20°C. Avoid repeated freezing and thawing



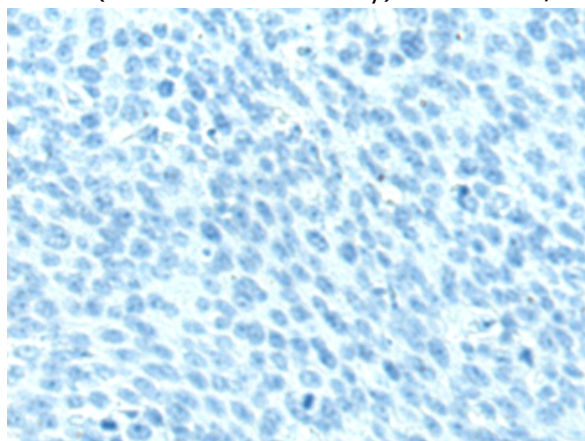
Immunohistochemistry analysis of paraffin embedded Human tonsil tissue using 216404(CLEC7A Antibody) at a dilution of 1/80(Cytoplasm and Cell membrane).



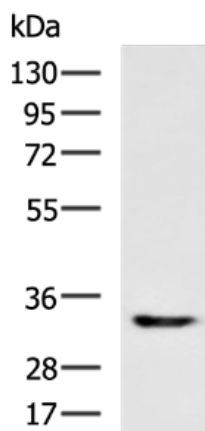
In comparison with the IHC on the left, the same paraffin-embedded Human tonsil tissue is first treated with the fusion protein and then with 216404(Anti-CLEC7A Antibody) at dilution 1/80.



The image on the left is immunohistochemistry of paraffin-embedded Human cervical cancer tissue using 216404(Anti-CLEC7A Antibody) at a dilution of 1/80.



In comparison with the IHC on the left, the same paraffin-embedded Human cervical cancer tissue is first treated with fusion protein and then with D220382(Anti-CLEC7A Antibody) at dilution 1/80.



Gel: 8%SDS-PAGE, Lysate: 40 µg;  
Lane: 231 cell lysate;  
Primary antibody: 216404(CLEC7A Antibody) at dilution 1/250;  
Secondary antibody: HRP-conjugated Goat anti rabbit IgG at 1/5000 dilution;  
Exposure time: 90 seconds



# Product Description

Pioneering GTPase and Oncogene Product Development since 2010

---