

## CLIC4 RABBIT MAB

**Cat.#:** N262045

**Product Name:** Anti-CLIC4 Rabbit Monoclonal Antibody

**Synonyms:** CLIC4; Chloride intracellular channel protein 4; Intracellular chloride ion channel protein p64H1

**UNIPROT ID:** Q9Y696

**Background:** Can insert into membranes and form poorly selective ion channels that may also transport chloride ions. Channel activity depends on the pH. Membrane insertion seems to be redox-regulated and may occur only under oxidizing conditions. Promotes cell-surface expression of HRH3. Has alternate cellular functions like a potential role in angiogenesis or in maintaining apical-basolateral membrane polarity during mitosis and cytokinesis. Could also promote endothelial cell proliferation and regulate endothelial morphogenesis (tubulogenesis).

**Immunogen:** A synthetic peptide of human CLIC4

**Applications:** WB,IHC-F,IHC-P,ICC/IF,IP

**Recommended Dilutions:** WB: 1/500-1/1000 IHC: 1/50-1/100 IF: 1/50-1/200 IP: 1/20

**Host Species:** Rabbit

**Clonality:** Rabbit Monoclonal

**Clone ID:** R02-7A1

**MW:** Calculated MW: 29 kDa; Observed MW: 29 kDa

**Isotype:** IgG

**Purification:** Affinity Purified

**Species Reactivity:** Human,Mouse,Rat

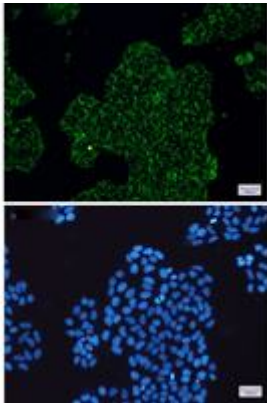
**Conjugation:** Unconjugated

**Modification:** Unmodified

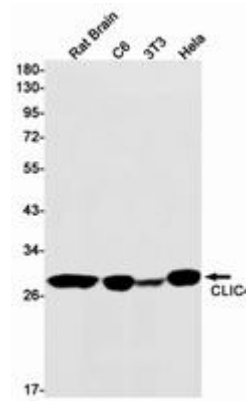
**Constituents:** PBS (without Mg<sup>2+</sup> and Ca<sup>2+</sup>), pH 7.3 containing 50% glycerol, 0.5% BSA and 0.02% sodium azide

**Research Areas:** Cell Biology

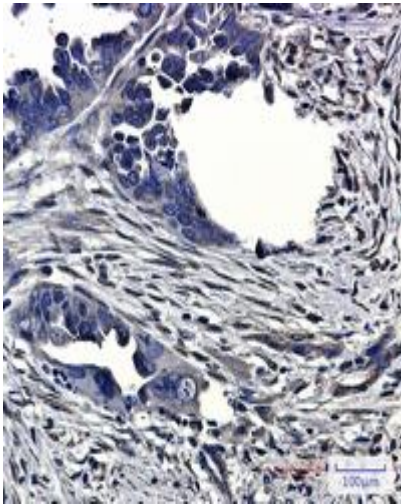
**Storage & Shipping:** Store at -20°C. Avoid repeated freezing and thawing



Immunocytochemistry analysis of CLIC4(green) in Hela using CLIC4 antibody, and DAPI(blue)



Western blot analysis of CLIC4 in rat Brain, C6, 3T3, Hela lysates using CLIC4 antibody.



Immunohistochemistry analysis of paraffin-embedded Human Cholangiocarcinoma using CLIC4 antibody. High-pressure and temperature Sodium Citrate pH 6.0 was used for antigen retrieval.