

CLIC6 RABBIT PAB

Cat.#: S221747

Product Name: Anti-CLIC6 Rabbit Polyclonal Antibody

Synonyms: CLIC1L

UNIPROT ID: Q96NY7 (Gene Accession - XP_011527952)

Background: This gene encodes a member of the chloride intracellular channel family of proteins. The gene is part of a large triplicated region found on chromosomes 1, 6, and 21. Alternative splicing results in multiple transcript variants encoding different isoforms.

Immunogen: Synthetic peptide of human CLIC6

Applications: ELISA, IHC

Recommended Dilutions: IHC: 30-150; ELISA: 5000-10000

Host Species: Rabbit

Clonality: Rabbit Polyclonal

Isotype: Immunogen-specific rabbit IgG

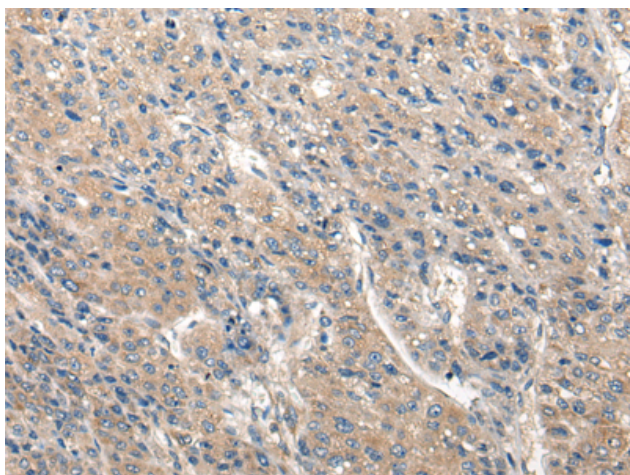
Purification: Antigen affinity purification

Species Reactivity: Human, Mouse, Rat

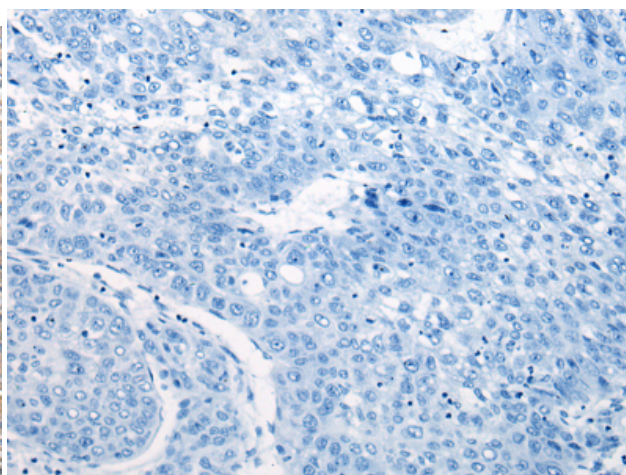
Constituents: PBS (without Mg²⁺ and Ca²⁺), pH 7.4, 150 mM NaCl, 0.05% Sodium Azide and 40% glycerol

Research Areas: Metabolism, Neuroscience

Storage & Shipping: Store at -20°C. Avoid repeated freezing and thawing



Immunohistochemistry analysis of paraffin embedded Human liver cancer tissue using 221747 (CLIC6 Antibody) at a dilution of 1/40 (Cytoplasm and Cell membrane).



In comparison with the IHC on the left, the same paraffin-embedded Human liver cancer tissue is first treated with the synthetic peptide and then with 221747 (Anti-CLIC6 Antibody) at dilution 1/40.