

## CLIP170 RABBIT MAB

**Cat.#:** N263273

**Product Name:** Anti-CLIP170 Rabbit Monoclonal Antibody

**Synonyms:** RSN; CLIP; CYLN1; CLIP170; CLIP-170

**UNIPROT ID:** P30622

**Background:** Binds to the plus end of microtubules and regulates the dynamics of the microtubule cytoskeleton.

**Immunogen:** A synthetic peptide of human CLIP170

**Applications:** WB,IHC-F,IHC-P,ICC/IF,IP

**Recommended Dilutions:** WB: 1/500-1/1000 IHC: 1/50-1/100 IF: 1/50-1/200 IP: 1/20

**Host Species:** Rabbit

**Clonality:** Rabbit Monoclonal

**Clone ID:** R07-1F3

**MW:** Calculated MW: 162 kDa; Observed MW: 170 kDa

**Isotype:** IgG

**Purification:** Affinity Purified

**Species Reactivity:** Human

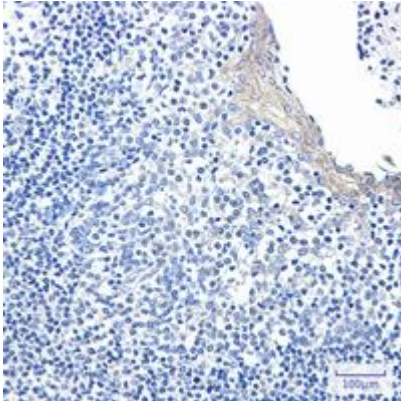
**Conjugation:** Unconjugated

**Modification:** Unmodified

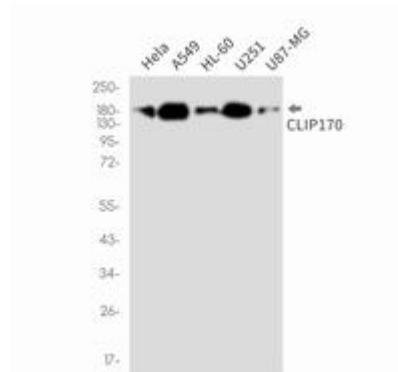
**Constituents:** PBS (without Mg<sup>2+</sup> and Ca<sup>2+</sup>), pH 7.3 containing 50% glycerol, 0.5% BSA and 0.02% sodium azide

**Research Areas:** Cell Biology

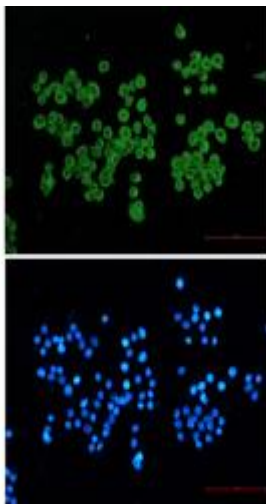
**Storage & Shipping:** Store at -20°C. Avoid repeated freezing and thawing



Immunohistochemistry analysis of paraffin-embedded Human tonsil using CLIP170 antibody. High-pressure and temperature Sodium Citrate pH 6.0 was used for antigen retrieval.



Western blot analysis of CLIP170 in HeLa, A549, HL-60, U251, U87-MG lysates using CLIP170 antibody.



Immunocytochemistry analysis of CLIP17 (green) in HeLa using CLIP170 antibody, and DAPI (blue)