

## CLPP RABBIT MAB

**Cat.#:** N262046

**Product Name:** Anti-CLPP Rabbit Monoclonal Antibody

**Synonyms:** Endopeptidase Clp

**UNIPROT ID:** Q16740

**Background:** Clp cleaves peptides in various proteins in a process that requires ATP hydrolysis. Clp may be responsible for a fairly general and central housekeeping function rather than for the degradation of specific substrates.

**Immunogen:** A synthetic peptide of human CLPP

**Applications:** WB,IP

**Recommended Dilutions:** WB: 1/500-1/1000 IP: 1/20

**Host Species:** Rabbit

**Clonality:** Rabbit Monoclonal

**Clone ID:** R02-1E5

**MW:** Calculated MW: 30 kDa; Observed MW: 30 kDa

**Isotype:** IgG

**Purification:** Affinity Purified

**Species Reactivity:** Human,Mouse,Rat

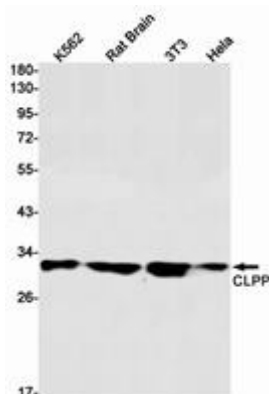
**Conjugation:** Unconjugated

**Modification:** Unmodified

**Constituents:** PBS (without Mg<sup>2+</sup> and Ca<sup>2+</sup>), pH 7.3 containing 50% glycerol, 0.5% BSA and 0.02% sodium azide

**Research Areas:** Signal Transduction

**Storage & Shipping:** Store at -20°C. Avoid repeated freezing and thawing



Western blot analysis of CLPP in K562, rat Brain, 3T3, HeLa lysates using CLPP antibody.



# Product Description

Pioneering GTPase and Oncogene Product Development since 2010

---