

CLPX RABBIT MAB

Cat.#: N263274

Product Name: Anti-CLPX Rabbit Monoclonal Antibody

Synonyms: ATP-dependent Clp protease ATP-binding subunit clpX-like; mitochondrial; CLPX

UNIPROT ID: O76031

Background: ATP-dependent specificity component of the Clp protease complex.

Immunogen: A synthetic peptide of human CLPX

Applications: WB, ICC/IF

Recommended Dilutions: WB: 1/500-1/1000 IF: 1/50-1/200

Host Species: Rabbit

Clonality: Rabbit Monoclonal

Clone ID: R05-2A6

MW: Calculated MW: 69 kDa; Observed MW: 69 kDa

Isotype: IgG

Purification: Affinity Purified

Species Reactivity: Human, Mouse, Rat, Hamster

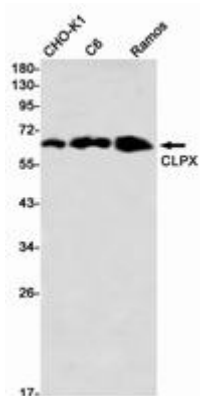
Conjugation: Unconjugated

Modification: Unmodified

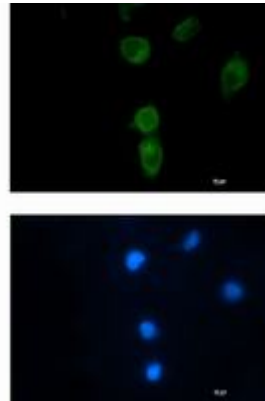
Constituents: PBS (without Mg²⁺ and Ca²⁺), pH 7.3 containing 50% glycerol, 0.5% BSA and 0.02% sodium azide

Research Areas: -

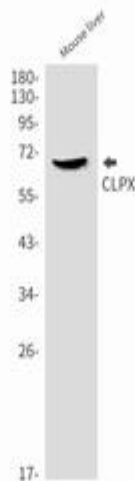
Storage & Shipping: Store at -20°C. Avoid repeated freezing and thawing



Western blot analysis of CLPX in CHO-K1, C6, Ramos lysates using CLPX antibody



Immunocytochemistry analysis of CLPX (green) in HT-1080 using CLPX antibody, and DAPI (blue).



Western blot analysis of CLPX in mouse liver lysates using CLPX antibody.