

CLSTN1 RABBIT MAB

Cat.#: N263275

Product Name: Anti-CLSTN1 Rabbit Monoclonal Antibody

Synonyms: Alcadin alpha 1; alcalpha1; alcalpha2; Calsyntenin 1; CDHR12; Clstn1; CSI; CSTN1; PIK3CD; XB31alpha

UNIPROT ID: O94985

Background: Induces KLC1 association with vesicles and functions as a cargo in axonal anterograde transport. Complex formation with APBA2 and APP, stabilizes APP metabolism and enhances APBA2-mediated suppression of beta-APP40 secretion, due to the retardation of intracellular APP maturation.

Immunogen: A synthetic peptide of human CLSTN1

Applications: WB,IHC-F,IHC-P,ICC/IF

Recommended Dilutions: WB: 1/500-1/1000 IHC: 1/50-1/100 IF: 1/50-1/200

Host Species: Rabbit

Clonality: Rabbit Monoclonal

Clone ID: R07-8H2

MW: Calculated MW: 110 kDa; Observed MW: 115 kDa

Isotype: IgG

Purification: Affinity Purified

Species Reactivity: Human,Mouse,Hamster

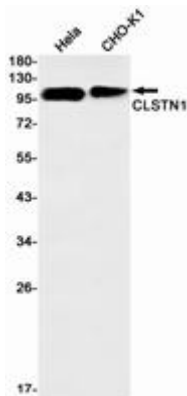
Conjugation: Unconjugated

Modification: Unmodified

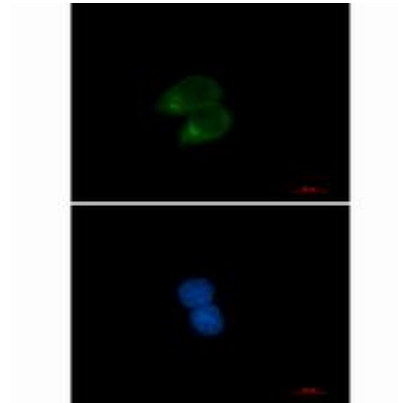
Constituents: PBS (without Mg²⁺ and Ca²⁺), pH 7.3 containing 50% glycerol, 0.5% BSA and 0.02% sodium azide

Research Areas: Neuroscience

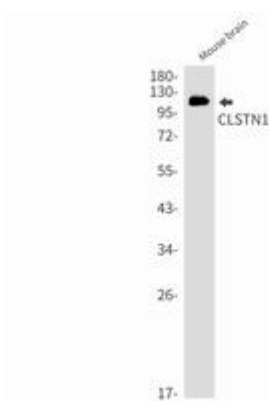
Storage & Shipping: Store at -20°C. Avoid repeated freezing and thawing



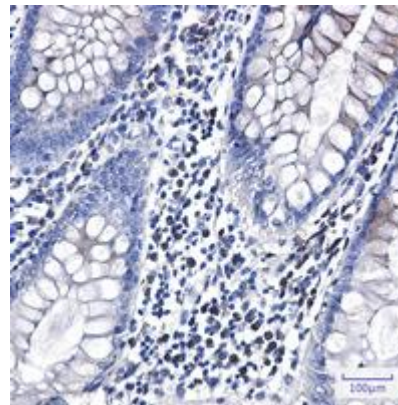
Western blot analysis of CLSTN1 in HeLa, CHO-K1 lysates using CLSTN1 antibody



Immunocytochemistry analysis of CLSTN1 (green) in HeLa using CLSTN1 antibody, and DAPI (blue).



Western blot analysis of CLSTN1 in mouse brain lysates using CLSTN1 antibody.



Immunohistochemistry analysis of paraffin-embedded Human colon cancer using CLSTN1 antibody. High-pressure and temperature Sodium Citrate pH 6.0 was used for antigen retrieval.