

CLU/APO J RABBIT PAB

Cat.#: S218423

Product Name: Anti-CLU/APO J Rabbit Polyclonal Antibody

Synonyms: CLI; AAG4; APOJ; CLU1; CLU2; KUB1; SGP2; APO-J; SGP-2; SP-40; TRPM2; TRPM-2; NA1/NA2

UNIPROT ID: P10909 (Gene Accession - BC010514)

Background: The protein encoded by this gene is a secreted chaperone that can under some stress conditions also be found in the cell cytosol. It has been suggested to be involved in several basic biological events such as cell death, tumor progression, and neurodegenerative disorders. Alternate splicing results in both coding and non-coding variants.

Immunogen: Fusion protein of human CLU/APO J

Applications: ELISA, WB, IHC

Recommended Dilutions: IHC: 30-150;WB: 200-1000;ELISA: 5000-10000

Host Species: Rabbit

Clonality: Rabbit Polyclonal

Isotype: Immunogen-specific rabbit IgG

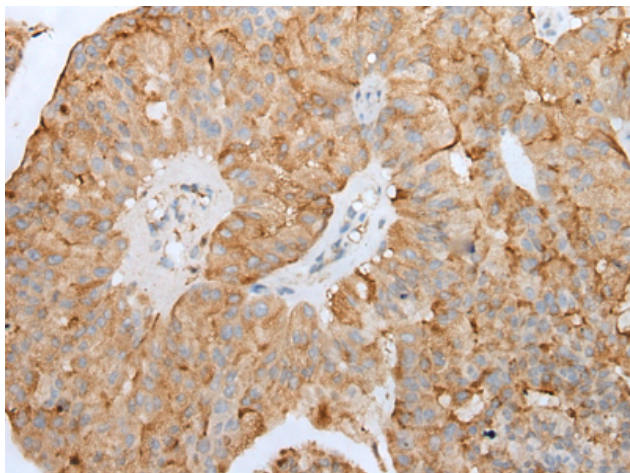
Purification: Antigen affinity purification

Species Reactivity: Human, Rat

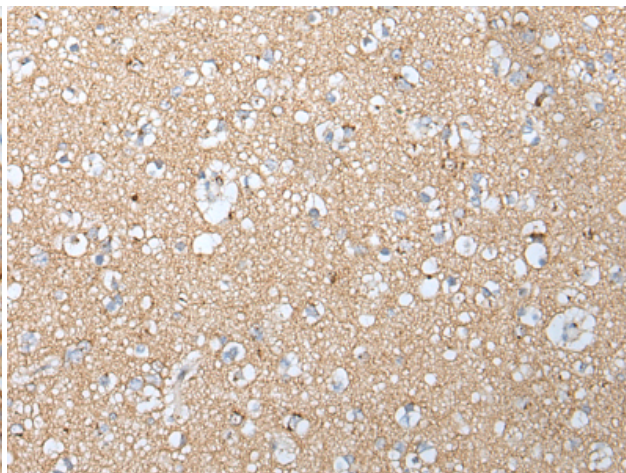
Constituents: PBS (without Mg²⁺ and Ca²⁺), pH 7.4, 150 mM NaCl, 0.05% Sodium Azide and 40% glycerol

Research Areas: Metabolism, Signal Transduction, Cancer, Cardiovascular, Immunology

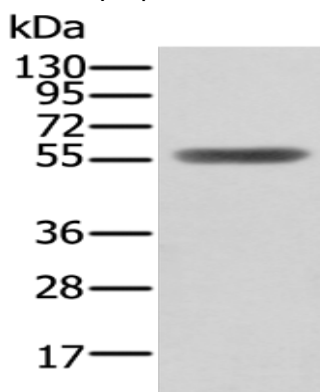
Storage & Shipping: Store at -20°C. Avoid repeated freezing and thawing



Immunohistochemistry analysis of paraffin-embedded Human liver cancer tissue using 218423(CLU/APO J Antibody) at a dilution of 1/45(Cytoplasm).



Immunohistochemistry analysis of paraffin-embedded Human brain tissue using 218423(Anti-CLU/APO J Antibody) at a dilution of 1/45.



Gel: 8%SDS-PAGE, Lysate: 40 µg;
Lane: Human fetal brain tissue lysate;
Primary antibody: 218423(CLU/APO J Antibody) at dilution 1/400;
Secondary antibody: Goat anti rabbit IgG at 1/8000 dilution;
Exposure time: 30 seconds