

CLUL1 RABBIT PAB

Cat.#: S218513

Product Name: Anti-CLUL1 Rabbit Polyclonal Antibody

Synonyms: RA337M

UNIPROT ID: Q15846 (Gene Accession - BC025381)

Background: CLUL1 is a retina-specific clusterin-like protein which shows nearly 25% identity to clusterin at the protein level. It is expressed specifically in cone photoreceptor cells.

Immunogen: Fusion protein of human CLUL1

Applications: ELISA, IHC

Recommended Dilutions: IHC: 20-100; ELISA: 5000-10000

Host Species: Rabbit

Clonality: Rabbit Polyclonal

Isotype: Immunogen-specific rabbit IgG

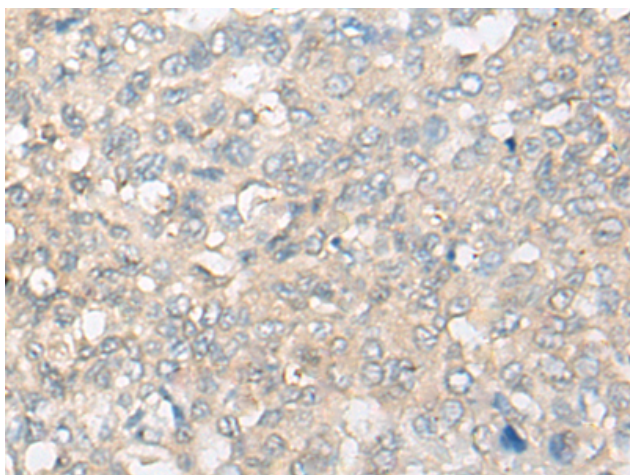
Purification: Antigen affinity purification

Species Reactivity: Human

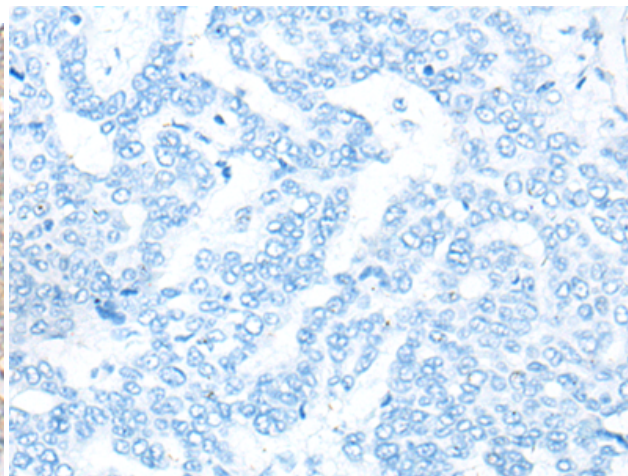
Constituents: PBS (without Mg²⁺ and Ca²⁺), pH 7.4, 150 mM NaCl, 0.05% Sodium Azide and 40% glycerol

Research Areas: Neuroscience

Storage & Shipping: Store at -20°C. Avoid repeated freezing and thawing



Immunohistochemistry analysis of paraffin embedded Human liver cancer tissue using 218513 (CLUL1 Antibody) at a dilution of 1/20 (Secreted).



In comparison with the IHC on the left, the same paraffin-embedded Human liver cancer tissue is first treated with the fusion protein and then with 218513 (Anti-CLUL1 Antibody) at dilution 1/20.