

CLUSTERIN ALPHA CHAIN RABBIT MAB

Cat.#: N262048

Product Name: Anti-Clusterin alpha Chain Rabbit Monoclonal Antibody

Synonyms: Cli; ApoJ; Sgp2; SP-40; Sgp-2; Sugp-2; A1893575; D14Ucla3

UNIPROT ID: Q06890

Background: Functions as extracellular chaperone that prevents aggregation of nonnative proteins. Prevents stress-induced aggregation of blood plasma proteins. Inhibits formation of amyloid fibrils by APP, APOC2, B2M, CALCA, CSN3, SNCA and aggregation-prone LYZ variants (in vitro). Does not require ATP. Maintains partially unfolded proteins in a state appropriate for subsequent refolding by other chaperones, such as HSPA8/HSC70. Does not refold proteins by itself.

Immunogen: Recombinant protein of mouse Clusterin alpha chain

Applications: WB,IP

Recommended Dilutions: WB: 1/500-1/1000 IP: 1/20

Host Species: Rabbit

Clonality: Rabbit Monoclonal

Clone ID: R07-7A7

MW: Calculated MW: 52 kDa; Observed MW: 42 kDa

Isotype: IgG

Purification: Affinity Purified

Species Reactivity: Rat

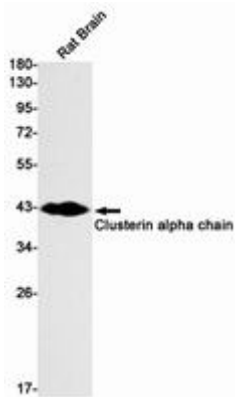
Conjugation: Unconjugated

Modification: Unmodified

Constituents: PBS (without Mg²⁺ and Ca²⁺), pH 7.3 containing 50% glycerol, 0.5% BSA and 0.02% sodium azide

Research Areas: Immunology

Storage & Shipping: Store at -20°C. Avoid repeated freezing and thawing



Western blot analysis of Clusterin alpha chain in rat Brain lysates using Clusterin alpha Chain antibody.