

CMKLR1 RABBIT PAB

Cat.#: S221189

Product Name: Anti-CMKLR1 Rabbit Polyclonal Antibody

Synonyms: DEZ; RVER1; ChemR23; CHEMERINR

UNIPROT ID: Q99788 (Gene Accession - NP_004063)

Background: Enables adipokinetic hormone binding activity and adipokinetic hormone receptor activity. Involved in several processes, including negative regulation of NF-kappaB transcription factor activity; positive regulation of macrophage chemotaxis; and regulation of calcium-mediated signaling. Located in plasma membrane.

Immunogen: Synthetic peptide of human CMKLR1

Applications: ELISA, WB, IHC

Recommended Dilutions: IHC: 50-200;WB: 1000-5000;ELISA: 5000-10000

Host Species: Rabbit

Clonality: Rabbit Polyclonal

Isotype: Immunogen-specific rabbit IgG

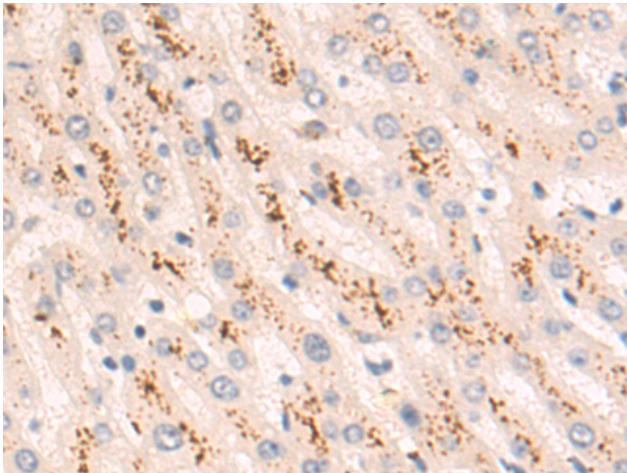
Purification: Antigen affinity purification

Species Reactivity: Human, Mouse

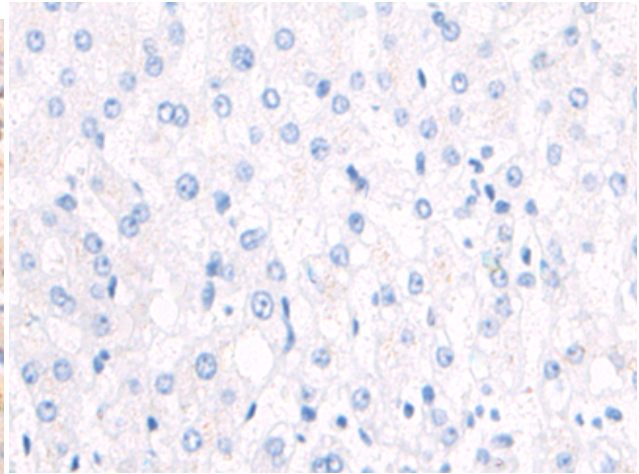
Constituents: PBS (without Mg²⁺ and Ca²⁺), pH 7.4, 150 mM NaCl, 0.05% Sodium Azide and 40% glycerol

Research Areas: Signal Transduction, Cell Biology

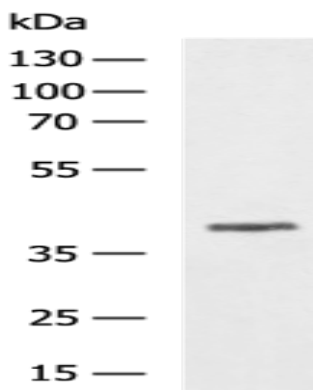
Storage & Shipping: Store at -20°C. Avoid repeated freezing and thawing



Immunohistochemistry analysis of paraffin embedded Human liver cancer tissue using 221189(CMKLR1 Antibody) at a dilution of 1/50(Cytoplasm).



In comparison with the IHC on the left, the same paraffin-embedded Human liver cancer tissue is first treated with the synthetic peptide and then with 221189(Anti-CMKLR1 Antibody) at dilution 1/50.



Gel: 8%SDS-PAGE, Lysate: 40 μ g;
Lane: NIH/3T3 cell lysate;
Primary antibody: 221189(CMKLR1 Antibody) at dilution 1/1000;
Secondary antibody: HRP-conjugated Goat anti rabbit IgG at 1/5000 dilution;
Exposure time: 30 seconds