

CMTM6 RABBIT PAB

Cat.#: S219802

Product Name: Anti-CMTM6 Rabbit Polyclonal Antibody

Synonyms: CKLFSF6; PRO2219

UNIPROT ID: Q9NX76 (Gene Accession - NP_060271)

Background: CMTM6 belongs to the chemokine-like factor gene superfamily, a novel family that is similar to the chemokine and transmembrane 4 superfamilies. This gene is one of several chemokine-like factor genes located in a cluster on chromosome 3.

CMTM6 is involved in the immune-related and metabolism-related pathways. It increases the expression of programmed cell death 1 ligand 1 protein, thereby impairing T cell function. Various manufactured therapeutic monoclonal antibody drugs, e.g. pembrolizumab, atezolizumab, durvalumab, nivolumab, and avelumab, bind to and inhibit the stimulation of PD-1 on CD8+ T cells by PD-L1. In effect, they block the ability of CMTM6 to suppress PDL1/PD-1-stimulated CD8+ T-cell immune responses against tumor cells. Elevated expression of CMTM6 in glioma and head and neck squamous cell carcinoma was shown to be associated with a poor prognosis; in addition, CMTM6 is also a potential therapeutic target for triple-negative breast cancer.

Immunogen: Synthetic peptide of human CMTM6

Applications: ELISA, WB, IHC

Recommended Dilutions: IHC: 50-200;WB: 500-2000;ELISA: 5000-10000

Host Species: Rabbit

Clonality: Rabbit Polyclonal

Isotype: Immunogen-specific rabbit IgG

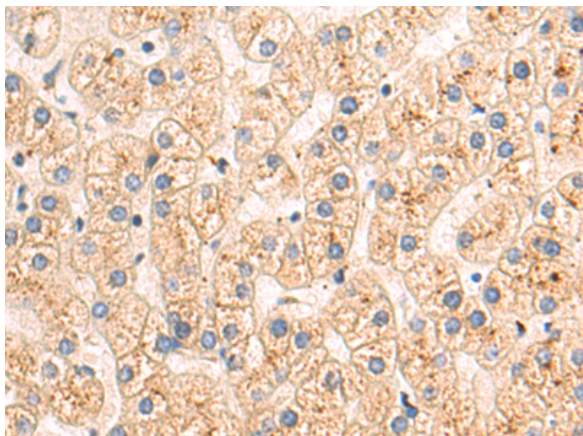
Purification: Antigen affinity purification

Species Reactivity: Human

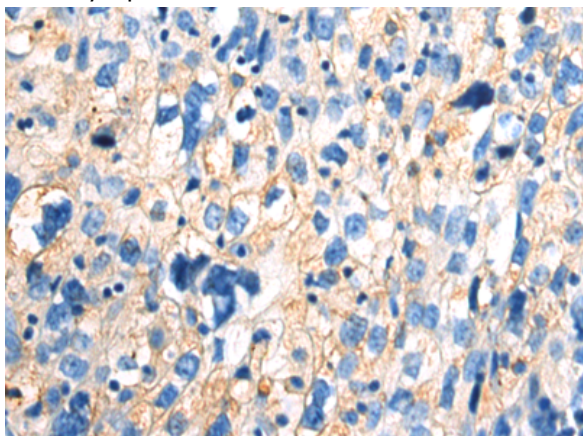
Constituents: PBS (without Mg²⁺ and Ca²⁺), pH 7.4, 150 mM NaCl, 0.05% Sodium Azide and 40% glycerol

Research Areas: Cell Biology, Immunology

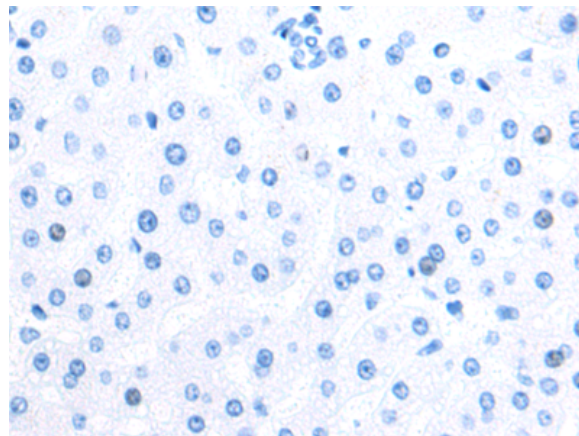
Storage & Shipping: Store at -20°C. Avoid repeated freezing and thawing



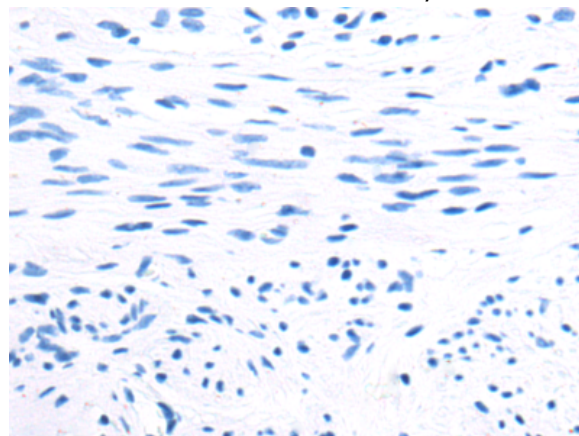
Immunohistochemistry analysis of paraffin embedded Human liver cancer tissue using 219802(CMTM6 Antibody) at a dilution of 1/50(Cytoplasm and Cell membrane).



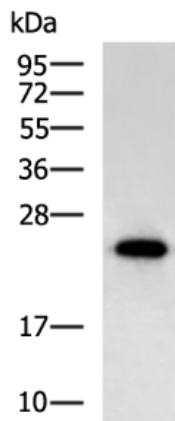
The image on the left is immunohistochemistry of paraffin-embedded Human cervical cancer tissue using 219802(Anti-CMTM6 Antibody) at a dilution of 1/50.



In comparison with the IHC on the left, the same paraffin-embedded Human liver cancer tissue is first treated with the synthetic peptide and then with 219802(Anti-CMTM6 Antibody) at dilution 1/50.



In comparison with the IHC on the left, the same paraffin-embedded Human cervical cancer tissue is first treated with synthetic peptide and then with D260396(Anti-CMTM6 Antibody) at dilution 1/50.



Gel: 12%SDS-PAGE, Lysate: 40 μ g;
Lane: U251 cell lysate;
Primary antibody: 219802(CMTM6 Antibody) at dilution 1/400;
Secondary antibody: HRP-conjugated Goat anti rabbit IgG at 1/5000 dilution;
Exposure time: 10 seconds



Product Description

Pioneering GTPase and Oncogene Product Development since 2010
