

CMTR2 RABBIT PAB

Cat.#: S219400

Product Name: Anti-CMTR2 Rabbit Polyclonal Antibody

Synonyms: AFT; MTr2; HMTr2; FTSJD1

UNIPROT ID: Q8IYT2 (Gene Accession - BC035005)

Background: S-adenosyl-L-methionine-dependent methyltransferase that mediates mRNA cap2 2'-O-ribose methylation to the 5'-cap structure of mRNAs. Methylates the ribose of the second nucleotide of a m7GpppG-capped mRNA and small nuclear RNA (snRNA) (cap0) to produce m7GpppRmpNm (cap2). Recognizes a guanosine cap on RNA independently of its N7 methylation status. Display cap2 methylation on both cap0 and cap1. Displays a preference for cap1 RNAs.

Immunogen: Fusion protein of human CMTR2

Applications: ELISA, IHC

Recommended Dilutions: IHC: 50-200; ELISA: 5000-10000

Host Species: Rabbit

Clonality: Rabbit Polyclonal

Isotype: Immunogen-specific rabbit IgG

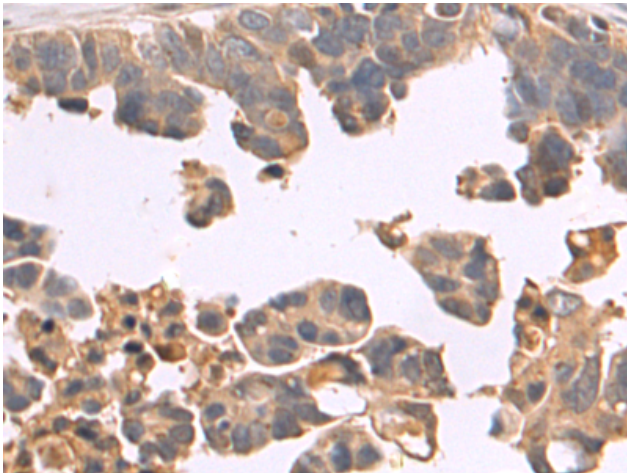
Purification: Antigen affinity purification

Species Reactivity: Human

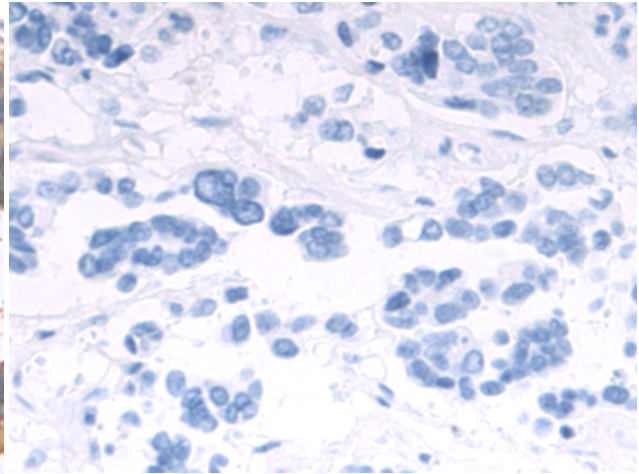
Constituents: PBS (without Mg²⁺ and Ca²⁺), pH 7.4, 150 mM NaCl, 0.05% Sodium Azide and 40% glycerol

Research Areas: Cell Biology

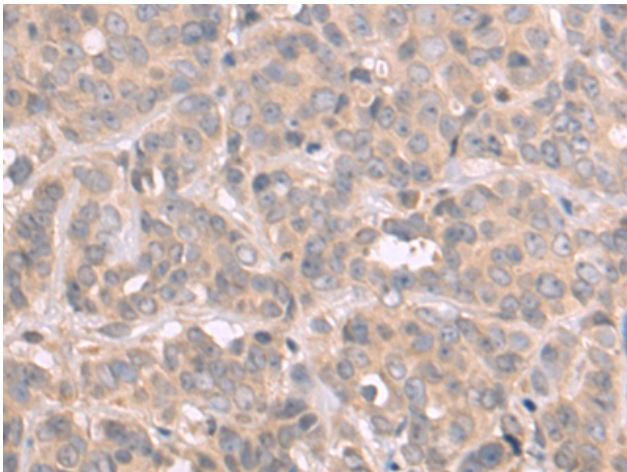
Storage & Shipping: Store at -20°C. Avoid repeated freezing and thawing



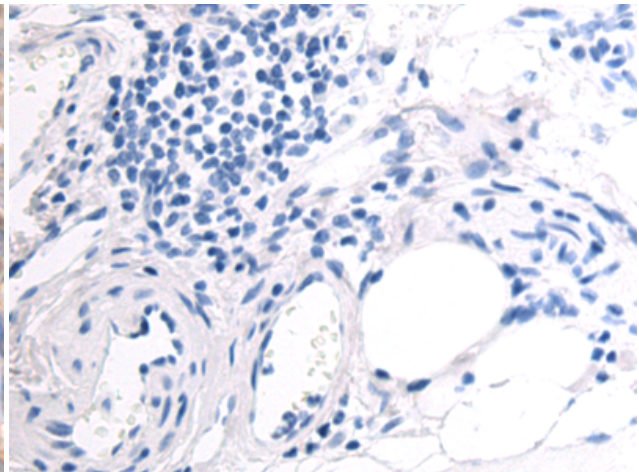
Immunohistochemistry analysis of paraffin embedded Human colorectal cancer tissue using 219400 (CMTR2 Antibody) at a dilution of 1/80 (Cytoplasm).



In comparison with the IHC on the left, the same paraffin-embedded Human colorectal cancer tissue is first treated with the fusion protein and then with 219400 (Anti-CMTR2 Antibody) at dilution 1/80.



The image on the left is immunohistochemistry of paraffin-embedded Human breast cancer tissue using 219400 (Anti-CMTR2 Antibody) at a dilution of 1/80.



In comparison with the IHC on the left, the same paraffin-embedded Human breast cancer tissue is first treated with fusion protein and then with D226767 (Anti-CMTR2 Antibody) at dilution 1/80.