

## CNDP1 RABBIT PAB

**Cat.#:** S211056

**Product Name:** Anti-CNDP1 Rabbit Polyclonal Antibody

**Synonyms:** CNI; CPGL2; HsT2308

**UNIPROT ID:** Q96KN2 (Gene Accession - BC113512 )

**Background:** This gene encodes a member of the M20 metalloprotease family. The encoded protein is specifically expressed in the brain, is a homodimeric dipeptidase which was identified as human carnosinase. This gene contains trinucleotide (CTG) repeat length polymorphism in the coding region.

**Immunogen:** Fusion protein of human CNDP1

**Applications:** ELISA, WB, IHC

**Recommended Dilutions:** IHC: 50-200;WB: 500-2000;ELISA: 2000-5000

**Host Species:** Rabbit

**Clonality:** Rabbit Polyclonal

**Isotype:** Immunogen-specific rabbit IgG

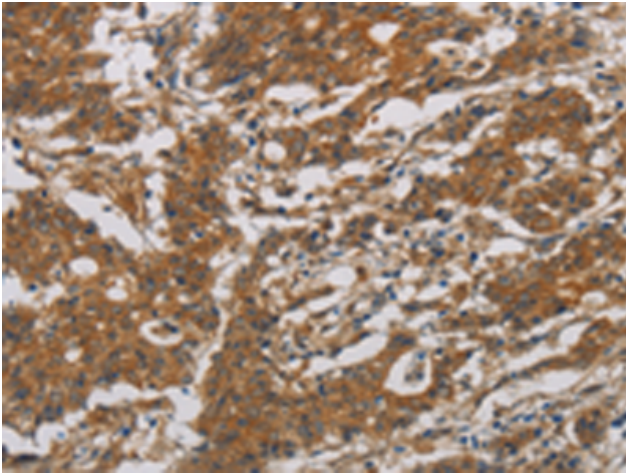
**Purification:** Antigen affinity purification

**Species Reactivity:** Human, Mouse, Rat

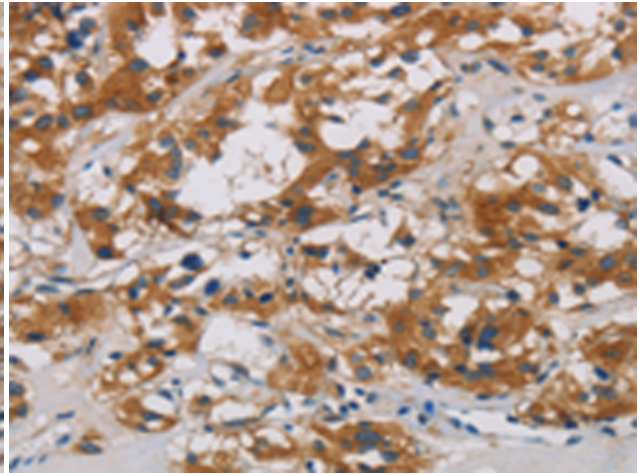
**Constituents:** PBS (without Mg<sup>2+</sup> and Ca<sup>2+</sup>), pH 7.4, 150 mM NaCl, 0.05% Sodium Azide and 40% glycerol

**Research Areas:** Signal Transduction

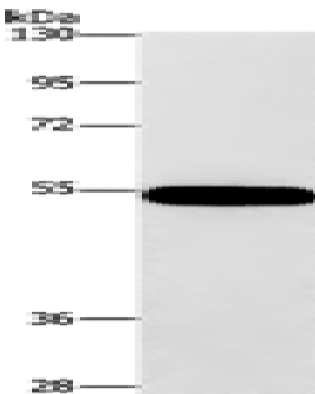
**Storage & Shipping:** Store at -20°C. Avoid repeated freezing and thawing



Immunohistochemistry analysis of paraffin-embedded Human gastric cancer tissue using 211056(CNDP1 Antibody) at a dilution of 1/30(Cytoplasm).



Immunohistochemistry analysis of paraffin-embedded Human thyroid cancer tissue using 211056(Anti-CNDP1 Antibody) at a dilution of 1/30.



Gel: 8%SDS-PAGE, Lysate: 40  $\mu$ g;  
Lane: 293T cells;  
Primary antibody: 211056(CNDP1 Antibody) at dilution 1/320;  
Secondary antibody: Goat anti rabbit IgG at 1/8000 dilution;  
Exposure time: 10 seconds