

## CNGA1 RABBIT PAB

**Cat.#:** S219707

**Product Name:** Anti-CNGA1 Rabbit Polyclonal Antibody

**Synonyms:** CNCG, CNG1, RP49, CNCG1, CNG-1, RCNC1, RCNC $\alpha$ , RCNC $\alpha$ 1

**UNIPROT ID:** P29973 (Gene Accession - NP\_000078 )

**Background:** The protein encoded by this gene is involved in phototransduction. Along with another protein, the encoded protein forms a cGMP-gated cation channel in the plasma membrane, allowing depolarization of rod photoreceptors. This represents the last step in the phototransduction pathway. Defects in this gene are a cause of retinitis pigmentosa autosomal recessive (ARRP) disease. Two transcript variants encoding different isoforms have been found for this gene.

**Immunogen:** Synthetic peptide of human CNGA1

**Applications:** ELISA, IHC

**Recommended Dilutions:** IHC: 25-100; ELISA: 500-5000

**Host Species:** Rabbit

**Clonality:** Rabbit Polyclonal

**Isotype:** Immunogen-specific rabbit IgG

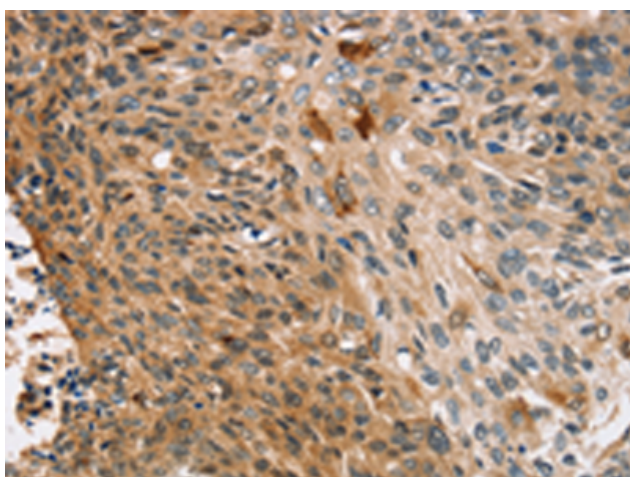
**Purification:** Antigen affinity purification

**Species Reactivity:** Human

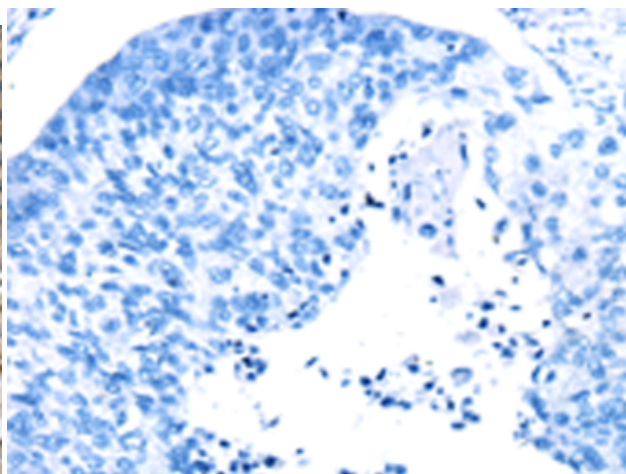
**Constituents:** PBS (without Mg<sup>2+</sup> and Ca<sup>2+</sup>), pH 7.4, 150 mM NaCl, 0.05% Sodium Azide and 40% glycerol

**Research Areas:** Signal Transduction, Neuroscience

**Storage & Shipping:** Store at -20°C. Avoid repeated freezing and thawing



Immunohistochemistry analysis of paraffin embedded Human esophagus cancer tissue using 219707(CNGA1 Antibody) at a dilution of 1/25(Cytoplasm and Cell membrane).



In comparison with the IHC on the left, the same paraffin-embedded Human esophagus cancer tissue is first treated with the synthetic peptide and then with 219707(Anti-CNGA1 Antibody) at dilution 1/25.