

CNGB1 RABBIT PAB

Cat.#: N225440

Product Name: Anti-CNGB1 Rabbit pAb

Synonyms: CNG4; GARI; GARP; RP45; CNCG2; CNCG4; GARP2; RCNC2; RCNCb; CNCG3L; CNGB1B; RCNCbeta

UNIPROT ID: Q14028

Background: Subunit of cyclic nucleotide-gated (CNG) channels, nonselective cation channels, which play important roles in both visual and olfactory signal transduction. When associated with CNGA1, it is involved in the regulation of ion flow into the rod photoreceptor outer segment (ROS), in response to light-induced alteration of the levels of intracellular cGMP. Isoform GARP2 is a high affinity rod photoreceptor phosphodiesterase (PDE6)-binding protein that modulates its catalytic properties: it is a regulator of spontaneous activation of rod PDE6, thereby serving to lower rod photoreceptor 'dark noise' and allowing these sensory cells to operate at the single photon detection limit.

Immunogen: The antiserum was produced against synthesized peptide derived from human CNGB1. AA range:571-620

Applications: WB,ELISA

Recommended Dilutions: WB: 1/500-1/1000 ELISA: 1/10000

Host Species: Rabbit

Clonality: Rabbit Polyclonal

Clone ID: -

MW: Calculated MW: 140 kDa; Observed MW: 102 kDa

Isotype: IgG

Purification: Affinity Chromatography

Species Reactivity: Human,Mouse,Rat

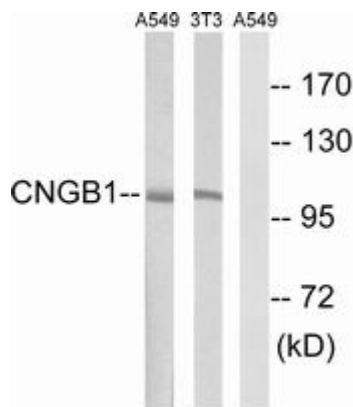
Conjugation: Unconjugated

Modification: Unmodified

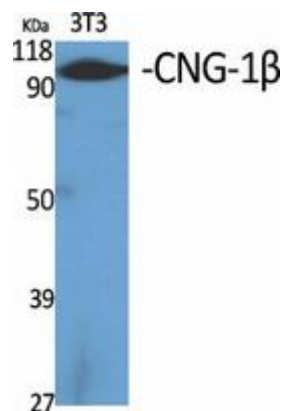
Constituents: PBS (without Mg²⁺ and Ca²⁺), pH 7.3 containing 50% glycerol, 0.5% BSA and 0.02% sodium azide

Research Areas: Signal Transduction

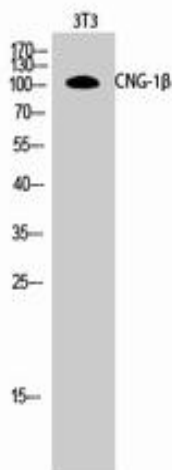
Storage & Shipping: Store at -20°C. Avoid repeated freezing and thawing



Western blot analysis of CNGB1 in NIH/3T3 and A549 lysates using CNGB1 antibody. The lane on the right is blocked with the synthesized peptide.



Western blot analysis of CNGB1 in various lysates using CNGB1 antibody.



Western blot analysis of CNGB1 in 3T3 lysates using CNGB1 antibody.