

CNP RABBIT PAB

Cat.#: S221411

Product Name: Anti-CNP Rabbit Polyclonal Antibody

Synonyms: CNP1

UNIPROT ID: P09543 (Gene Accession - NP_149124)

Background: May participate in RNA metabolism in the myelinating cell, CNP is the third most abundant protein in central nervous system myelin.

Immunogen: Synthetic peptide of human CNP

Applications: ELISA, WB, IHC

Recommended Dilutions: IHC: 50-200;WB: 1000-5000;ELISA: 5000-10000

Host Species: Rabbit

Clonality: Rabbit Polyclonal

Isotype: Immunogen-specific rabbit IgG

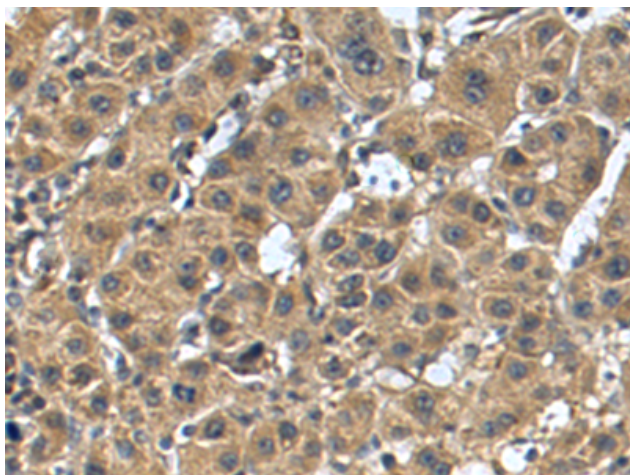
Purification: Antigen affinity purification

Species Reactivity: Human, Rat

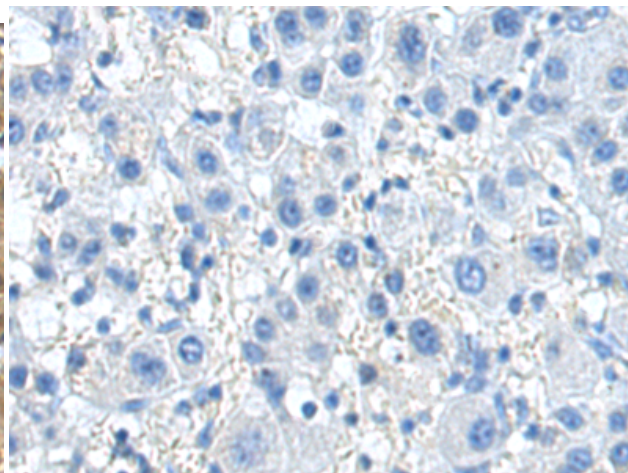
Constituents: PBS (without Mg²⁺ and Ca²⁺), pH 7.4, 150 mM NaCl, 0.05% Sodium Azide and 40% glycerol

Research Areas: Neuroscience

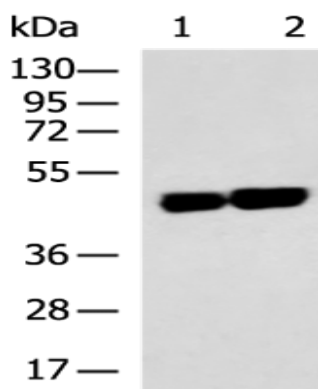
Storage & Shipping: Store at -20°C. Avoid repeated freezing and thawing



Immunohistochemistry analysis of paraffin embedded Human liver cancer tissue using 221411(CNP Antibody) at a dilution of 1/40(Cytoplasm).



In comparison with the IHC on the left, the same paraffin-embedded Human liver cancer tissue is first treated with the synthetic peptide and then with 221411(Anti-CNP Antibody) at dilution 1/40.



Gel: 8%SDS-PAGE, Lysate: 40 µg;
 Lane 1-2: Human cerebella tissue, Human cerebrum tissue lysates;
 Primary antibody: 221411(CNP Antibody) at dilution 1/900;
 Secondary antibody: HRP-conjugated Goat anti rabbit IgG at 1/5000 dilution;
 Exposure time: 2 minutes