

CNTLN RABBIT PAB

Cat.#: S221720

Product Name: Anti-CNTLN Rabbit Polyclonal Antibody

Synonyms: C9orf39; C9orf101; bA340N12.1

UNIPROT ID: Q9NXG0 (Gene Accession - NP_060208)

Background: Required for centrosome cohesion and recruitment of CEP68 to centrosomes.

Immunogen: Synthetic peptide of human CNTLN

Applications: ELISA, IHC

Recommended Dilutions: IHC: 25-100; ELISA: 5000-10000

Host Species: Rabbit

Clonality: Rabbit Polyclonal

Isotype: Immunogen-specific rabbit IgG

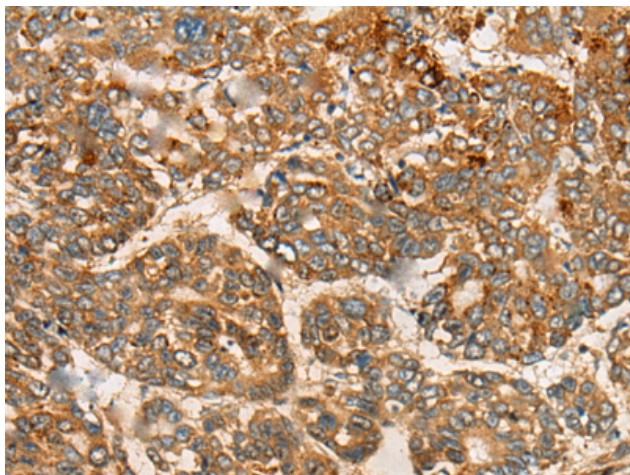
Purification: Antigen affinity purification

Species Reactivity: Human, Mouse

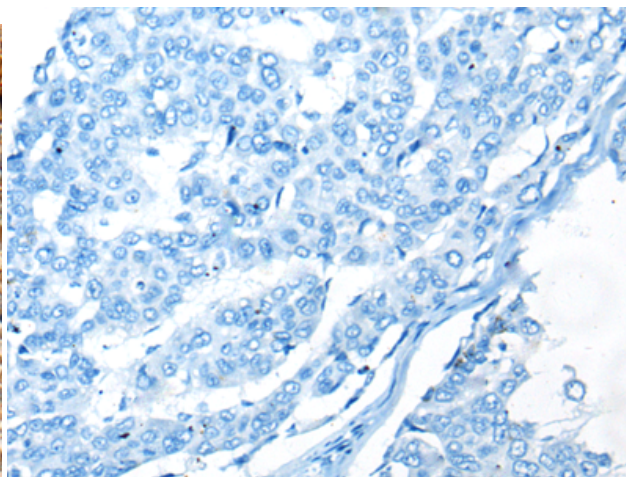
Constituents: PBS (without Mg²⁺ and Ca²⁺), pH 7.4, 150 mM NaCl, 0.05% Sodium Azide and 40% glycerol

Research Areas: Signal Transduction, Cancer

Storage & Shipping: Store at -20°C. Avoid repeated freezing and thawing



Immunohistochemistry analysis of paraffin embedded Human liver cancer tissue using 221720 (CNTLN Antibody) at a dilution of 1/30 (Cytoplasm).



In comparison with the IHC on the left, the same paraffin-embedded Human liver cancer tissue is first treated with the synthetic peptide and then with 221720 (Anti-CNTLN Antibody) at dilution 1/30.