

## COL15A1 RABBIT PAB

**Cat.#:** S214999

**Product Name:** Anti-COL15A1 Rabbit Polyclonal Antibody

**Synonyms:**

**UNIPROT ID:** P39059 (Gene Accession - NP\_001846 )

**Background:** This gene encodes the alpha chain of type XV collagen, a member of the FACIT collagen family (fibril-associated collagens with interrupted helices). Type XV collagen has a wide tissue distribution but the strongest expression is localized to basement membrane zones so it may function to adhere basement membranes to underlying connective tissue stroma. The proteolytically produced C-terminal fragment of type XV collagen is restin, a potentially antiangiogenic protein that is closely related to endostatin. Mouse studies have shown that collagen XV deficiency is associated with muscle and microvessel deterioration.

**Immunogen:** Synthetic peptide of human COL15A1

**Applications:** ELISA, IHC

**Recommended Dilutions:** IHC: 25-100; ELISA: 2000-5000

**Host Species:** Rabbit

**Clonality:** Rabbit Polyclonal

**Isotype:** Immunogen-specific rabbit IgG

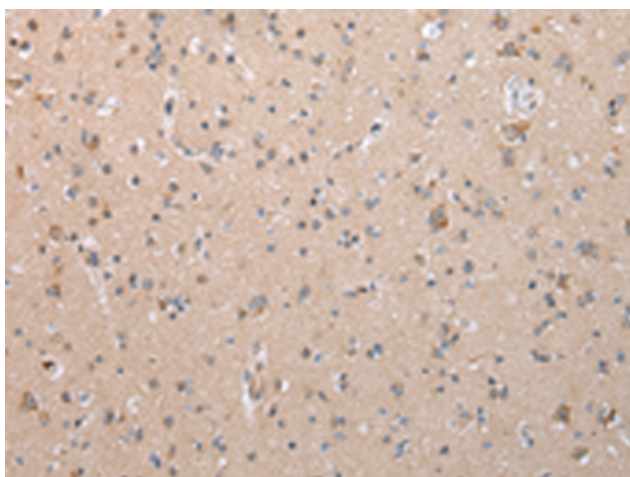
**Purification:** Antigen affinity purification

**Species Reactivity:** Human, Mouse

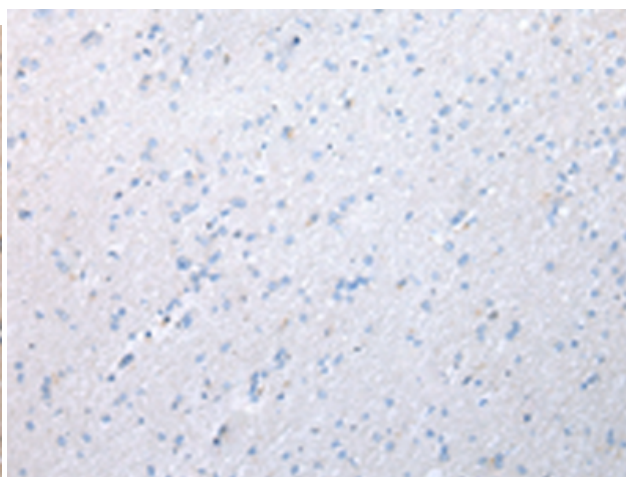
**Constituents:** PBS (without Mg<sup>2+</sup> and Ca<sup>2+</sup>), pH 7.4, 150 mM NaCl, 0.05% Sodium Azide and 40% glycerol

**Research Areas:** Signal Transduction, Cardiovascular

**Storage & Shipping:** Store at -20°C. Avoid repeated freezing and thawing



Immunohistochemistry analysis of paraffin embedded Human brain tissue using 214999(COL15A1 Antibody) at a dilution of 1/35(Cytoplasm).



In comparison with the IHC on the left, the same paraffin-embedded Human brain tissue is first treated with the synthetic peptide and then with 214999(Anti-COL15A1 Antibody) at dilution 1/35.