

## COLLAGEN I ALPHA 2 RABBIT PAB

**Cat.#:** N225441

**Product Name:** Anti-Collagen I alpha 2 Rabbit pAb

**Synonyms:** Collagen alpha-2(I) chain (Alpha-2 type I collagen)

**UNIPROT ID:** P08123

**Background:** This gene encodes one of the chains for type I collagen, the fibrillar collagen found in most connective tissues. Mutations in this gene are associated with osteogenesis imperfecta, Ehlers-Danlos syndrome, idiopathic osteoporosis, and atypical Marfan syndrome.

**Immunogen:** The antiserum was produced against synthesized peptide derived from human Collagen I. AA range:1-50

**Applications:** WB,IHC-F,IHC-P,ICC/IF,ELISA

**Recommended Dilutions:** WB: 1/500-1/1000 IHC: 1/50-1/100 IF: 1/50-1/200  
ELISA: 1/10000

**Host Species:** Rabbit

**Clonality:** Rabbit Polyclonal

**Clone ID:** -

**MW:** Calculated MW: 129 kDa; Observed MW: 200 kDa

**Isotype:** IgG

**Purification:** Affinity Purified

**Species Reactivity:** Human,Mouse,Rat

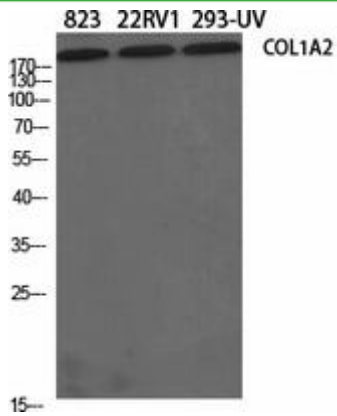
**Conjugation:** Unconjugated

**Modification:** Unmodified

**Constituents:** PBS (without Mg<sup>2+</sup> and Ca<sup>2+</sup>), pH 7.3 containing 50% glycerol, 0.5% BSA and 0.02% sodium azide

**Research Areas:** Cell Biology

**Storage & Shipping:** Store at -20°C. Avoid repeated freezing and thawing



Western blot analysis of Collagen I alpha 2 in 823, 22RV293UV lysates using Collagen I alpha 2 antibody.