

COLLAGEN IV ALPHA 1 RABBIT PAB

Cat.#: N225208

Product Name: Anti-Collagen IV alpha 1 Rabbit pAb

Synonyms: Collagen alpha-1(IV) chain [Cleaved into: Arresten]

UNIPROT ID: P02462

Background: Type IV collagen is the major structural component of glomerular basement membranes (GBM), forming a 'chicken-wire' meshwork together with laminins, proteoglycans and entactin/nidogen.

Immunogen: Synthesized peptide derived from Collagen IV . at AA range: 1428-1443

Applications: WB,ELISA

Recommended Dilutions: WB: 1/500-1/1000 ELISA: 1/10000

Host Species: Rabbit

Clonality: Rabbit Polyclonal

Clone ID: -

MW: Calculated MW: 161 kDa; Observed MW: 130 kDa

Isotype: IgG

Purification: Affinity Purified

Species Reactivity: Human,Mouse,Rat

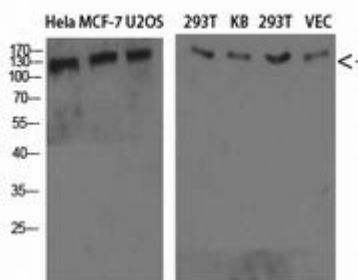
Conjugation: Unconjugated

Modification: Unmodified

Constituents: PBS (without Mg²⁺ and Ca²⁺), pH 7.3 containing 50% glycerol, 0.5% BSA and 0.02% sodium azide

Research Areas: Signal Transduction

Storage & Shipping: Store at -20°C. Avoid repeated freezing and thawing



Western blot analysis of Collagen IV alpha 1 in HeLa MCF-7 U2OS 293T KB 293T VEC lysates using Collagen IV alpha 1 antibody.



Product Description

Pioneering GTPase and Oncogene Product Development since 2010
