

COLLAGEN VIII ALPHA 2 RABBIT PAB

Cat.#: N225232

Product Name: Anti-Collagen VIII alpha 2 Rabbit pAb

Synonyms: Collagen alpha-2(VIII) chain (Endothelial collagen)

UNIPROT ID: P25067

Background: This gene encodes the alpha 2 chain of type VIII collagen. This protein is a major component of the basement membrane of the corneal endothelium and forms homo- or heterotrimers with alpha 1 (VIII) type collagens. Defects in this gene are associated with Fuchs endothelial corneal dystrophy and posterior polymorphous corneal dystrophy type 2. Alternative splicing results in multiple transcript variants.

Immunogen: Synthesized peptide derived from human COL8A2. at AA range: 611-660

Applications: WB,ELISA

Recommended Dilutions: WB: 1/500-1/1000 ELISA: 1/10000

Host Species: Rabbit

Clonality: Rabbit Polyclonal

Clone ID: -

MW: Calculated MW: 67 kDa; Observed MW: 80 kDa

Isotype: IgG

Purification: Affinity Purified

Species Reactivity: Human,Mouse,Rat

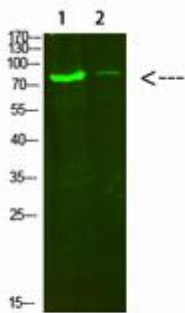
Conjugation: Unconjugated

Modification: Unmodified

Constituents: PBS (without Mg²⁺ and Ca²⁺), pH 7.3 containing 50% glycerol, 0.5% BSA and 0.02% sodium azide

Research Areas: Cell Biology

Storage & Shipping: Store at -20°C. Avoid repeated freezing and thawing



Western blot analysis of Collagen VIII alpha 2 in HeLa, 3T3 lysates using Collagen VIII alpha 2 antibody.