

## COMMD1 RABBIT PAB

**Cat.#:** S218527

**Product Name:** Anti-COMMD1 Rabbit Polyclonal Antibody

**Synonyms:** MURR1; C2orf5

**UNIPROT ID:** Q8N668 (Gene Accession - BC022046 )

**Background:** COMMD1 is a regulator of copper homeostasis, sodium uptake, and NF-kappa-B (see MIM 164011) signaling (de Bie et al., 2005 [PubMed 16267171]).

**Immunogen:** Fusion protein of human COMMD1

**Applications:** ELISA, WB, IHC

**Recommended Dilutions:** IHC: 25-100;WB: 200-1000;ELISA: 5000-10000

**Host Species:** Rabbit

**Clonality:** Rabbit Polyclonal

**Isotype:** Immunogen-specific rabbit IgG

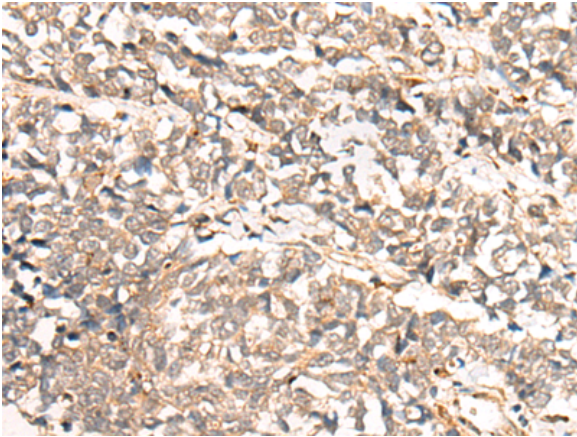
**Purification:** Antigen affinity purification

**Species Reactivity:** Human, Mouse

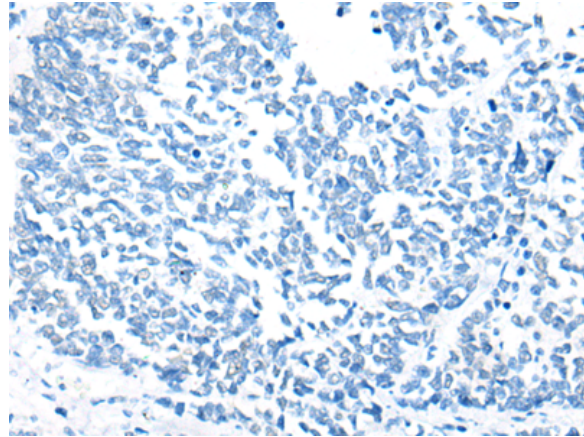
**Constituents:** PBS (without Mg<sup>2+</sup> and Ca<sup>2+</sup>), pH 7.4, 150 mM NaCl, 0.05% Sodium Azide and 40% glycerol

**Research Areas:** Metabolism, Epigenetics and Nuclear Signaling

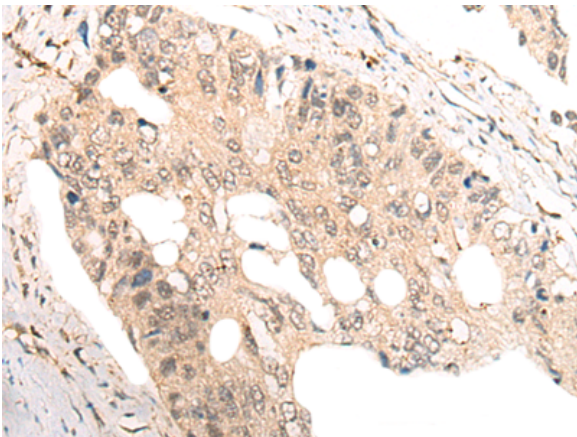
**Storage & Shipping:** Store at -20°C. Avoid repeated freezing and thawing



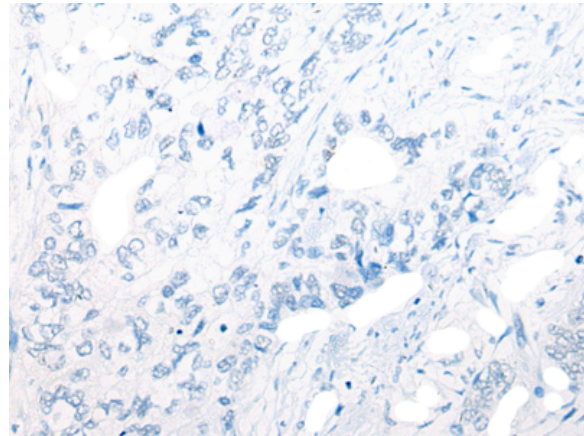
Immunohistochemistry analysis of paraffin embedded Human lung cancer tissue using 218527 (COMMD1 Antibody) at a dilution of 1/35 (Cytoplasm and Nucleus).



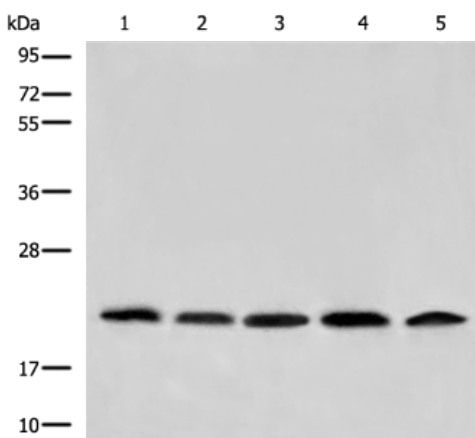
In comparison with the IHC on the left, the same paraffin-embedded Human lung cancer tissue is first treated with the fusion protein and then with 218527 (Anti-COMMD1 Antibody) at dilution 1/35.



The image on the left is immunohistochemistry of paraffin-embedded Human colorectal cancer tissue using 218527 (Anti-COMMD1 Antibody) at a dilution of 1/35.



In comparison with the IHC on the left, the same paraffin-embedded Human colorectal cancer tissue is first treated with fusion protein and then with D224622 (Anti-COMMD1 Antibody) at dilution 1/35.



Gel: 12% SDS-PAGE, Lysate: 40 µg;  
 Lane 1-5: HepG2, HeLa, A549, Jurkat and 231 cell lysates;  
 Primary antibody: 218527 (COMMD1 Antibody) at dilution 1/400;  
 Secondary antibody: Goat anti rabbit IgG at 1/8000 dilution;  
 Exposure time: 3 seconds



# Product Description

Pioneering GTPase and Oncogene Product Development since 2010

---