

## COMMD10 RABBIT PAB

**Cat.#:** S218169

**Product Name:** Anti-COMMD10 Rabbit Polyclonal Antibody

**Synonyms:** PTD002

**UNIPROT ID:** Q9Y6G5 (Gene Accession - BC005179 )

**Background:** May modulate activity of cullin-RING E3 ubiquitin ligase (CRL) complexes (PubMed:21778237). May down-regulate activation of NF-kappa-B (PubMed:15799966).

**Immunogen:** Fusion protein of human COMMD10

**Applications:** ELISA, WB, IHC

**Recommended Dilutions:** IHC: 20-100;WB: 200-1000;ELISA: 5000-10000

**Host Species:** Rabbit

**Clonality:** Rabbit Polyclonal

**Isotype:** Immunogen-specific rabbit IgG

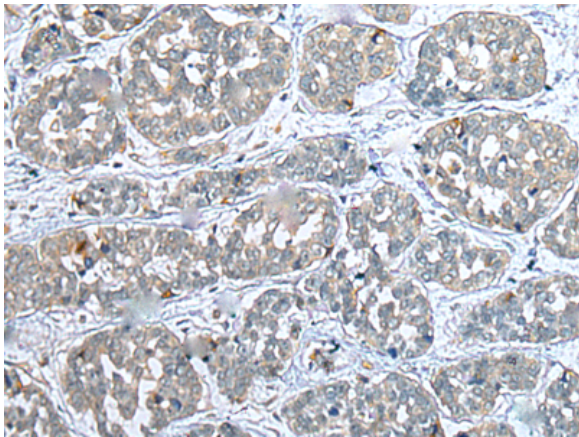
**Purification:** Antigen affinity purification

**Species Reactivity:** Human, Mouse

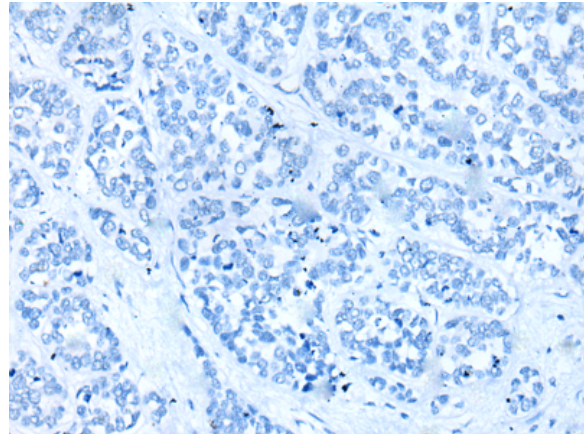
**Constituents:** PBS (without Mg<sup>2+</sup> and Ca<sup>2+</sup>), pH 7.4, 150 mM NaCl, 0.05% Sodium Azide and 40% glycerol

**Research Areas:** Epigenetics and Nuclear Signaling

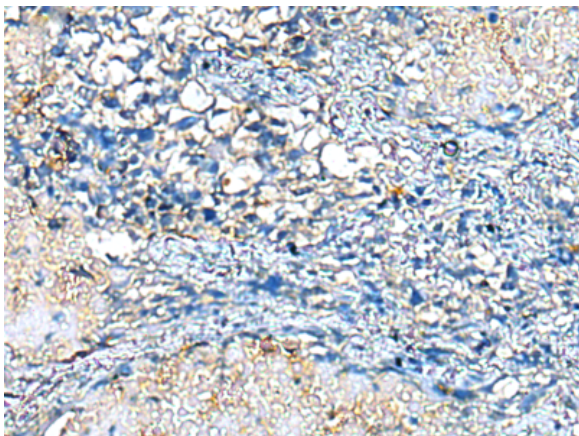
**Storage & Shipping:** Store at -20°C. Avoid repeated freezing and thawing



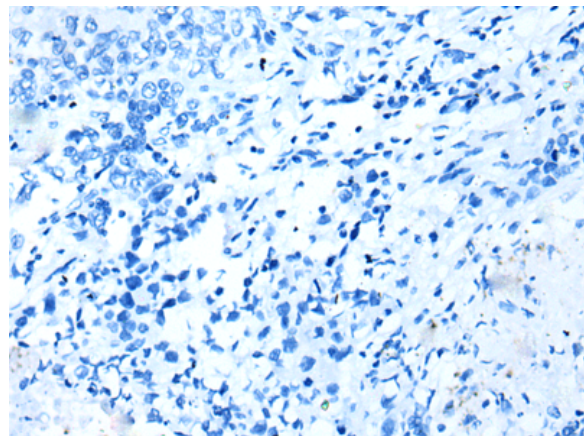
Immunohistochemistry analysis of paraffin embedded Human esophagus cancer tissue using 218169(COMMD10 Antibody) at a dilution of 1/25(Cytoplasm).



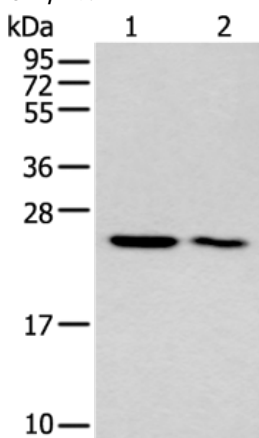
In comparison with the IHC on the left, the same paraffin-embedded Human esophagus cancer tissue is first treated with the fusion protein and then with 218169(Anti-COMMD10 Antibody) at dilution 1/25.



The image on the left is immunohistochemistry of paraffin-embedded Human lung cancer tissue using 218169(Anti-COMMD10 Antibody) at a dilution of 1/25.



In comparison with the IHC on the left, the same paraffin-embedded Human lung cancer tissue is first treated with fusion protein and then with D223867(Anti-COMMD10 Antibody) at dilution 1/25.



Gel: 12%SDS-PAGE, Lysate: 40 µg;  
Lane 1-2: Human left kidney tissue and liver cancer tissue lysates;  
Primary antibody: 218169(COMMD10 Antibody) at dilution 1/200;  
Secondary antibody: Goat anti rabbit IgG at 1/8000 dilution;  
Exposure time: 7 seconds



# Product Description

Pioneering GTPase and Oncogene Product Development since 2010

---