

## COMPLEX III SUBUNIT 7 RABBIT MAB

**Cat.#:** N263055

**Product Name:** Anti-Complex III Subunit 7 Rabbit Monoclonal Antibody

**Synonyms:** QPC; QCR7; QP-C; UQBC; UQBP; UQPC; UQCR6; MC3DN3

**UNIPROT ID:** P14927

**Background:** This is a component of the ubiquinol-cytochrome c reductase complex (complex III or cytochrome b-c1 complex), which is part of the mitochondrial respiratory chain. This component is involved in redox-linked proton pumping. Caution Was originally thought to be the ubiquinone-binding protein (QP-C).

**Immunogen:** Recombinant protein of human UQCRB

**Applications:** WB,IHC-P,IP

**Recommended Dilutions:** WB: 1/500-1/1000 IHC: 1/50-1/100 IP: 1/20

**Host Species:** Rabbit

**Clonality:** Rabbit Monoclonal

**Clone ID:** R04-4F5

**MW:** Calculated MW: 14 kDa; Observed MW: 14 kDa

**Isotype:** IgG

**Purification:** Affinity Purified

**Species Reactivity:** Human,Rat

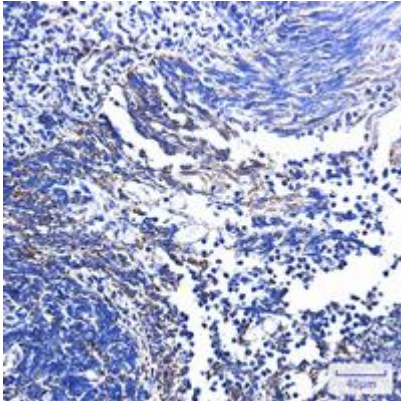
**Conjugation:** Unconjugated

**Modification:** Unmodified

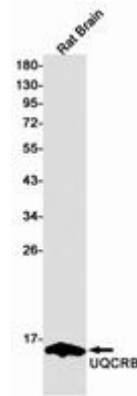
**Constituents:** PBS (without Mg<sup>2+</sup> and Ca<sup>2+</sup>), pH 7.3 containing 50% glycerol, 0.5% BSA and 0.02% sodium azide

**Research Areas:** Cardiovascular

**Storage & Shipping:** Store at -20°C. Avoid repeated freezing and thawing



Immunohistochemistry analysis of paraffin-embedded Human tonsil using UQCRB antibody. High-pressure and temperature Sodium Citrate pH 6.0 was used for antigen retrieval.



Western blot analysis of UQCRB in rat Brain lysates using Complex III Subunit 7 antibody.