

COPS8 RABBIT MAB

Cat.#: N261600

Product Name: Anti-COPS8 Rabbit Monoclonal Antibody

Synonyms: COP9 signalosome subunit 8; COP9; CSN8; SGN8

UNIPROT ID: Q99627

Background: Component of the COP9 signalosome complex (CSN), a complex involved in various cellular and developmental processes.

Immunogen: A synthetic peptide of human COPS8

Applications: WB,IHC-F,IHC-P,ICC/IF,IP

Recommended Dilutions: WB: 1/500-1/1000 IHC: 1/50-1/100 IF: 1/50-1/200 IP: 1/20

Host Species: Rabbit

Clonality: Rabbit Monoclonal

Clone ID: R05-6D7

MW: Calculated MW: 23 kDa; Observed MW: 23 kDa

Isotype: IgG

Purification: Affinity Purified

Species Reactivity: Human,Mouse,Rat

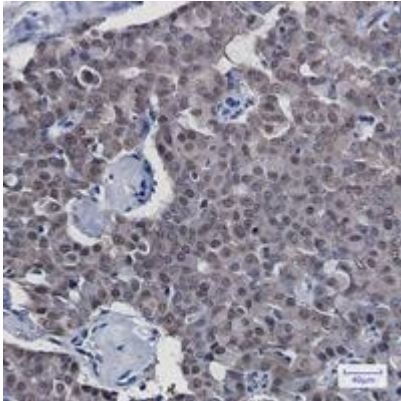
Conjugation: Unconjugated

Modification: Unmodified

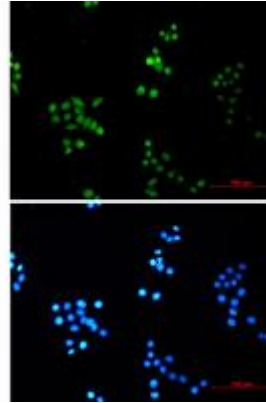
Constituents: PBS (without Mg²⁺ and Ca²⁺), pH 7.3 containing 50% glycerol, 0.5% BSA and 0.02% sodium azide

Research Areas: Immunology

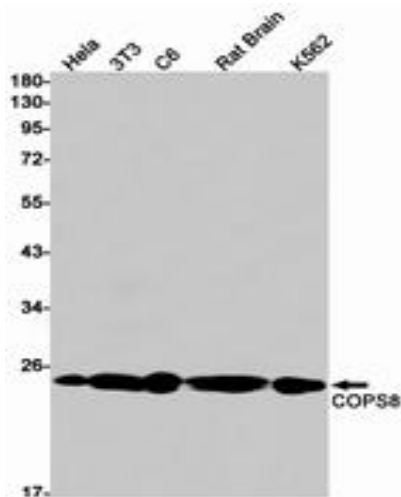
Storage & Shipping: Store at -20°C. Avoid repeated freezing and thawing



Immunohistochemistry analysis of paraffin-embedded Human breast cancer tissue using COPS8 antibody. High-pressure and temperature Sodium Citrate pH 6.0 was used for antigen retrieval.



Immunocytochemistry analysis of COPS8 (green) in Hela using COPS8 antibody, and DAPI (blue).



Western blot analysis of COPS8 in Hela, 3T3, C6, rat Brain, K562 lysates using COPS8 antibody.