

## CORO1A RABBIT PAB

**Cat.#:** S218539

**Product Name:** Anti-CORO1A Rabbit Polyclonal Antibody

**Synonyms:** p57; IMD8; TACO; CLABP; HCORO1; CLIPINA

**UNIPROT ID:** P31146 (Gene Accession - BC126385 )

**Background:** This gene encodes a member of the WD repeat protein family. WD repeats are minimally conserved regions of approximately 40 amino acids typically bracketed by gly-his and trp-aspartic acid (GH-WD), which may facilitate formation of heterotrimeric or multiprotein complexes. Members of this family are involved in a variety of cellular processes, including cell cycle progression, signal transduction, apoptosis, and gene regulation. Alternative splicing results in multiple transcript variants. A related pseudogene has been defined on chromosome 16.

**Immunogen:** Fusion protein of human CORO1A

**Applications:** ELISA, IHC

**Recommended Dilutions:** IHC: 20-100; ELISA: 5000-10000

**Host Species:** Rabbit

**Clonality:** Rabbit Polyclonal

**Isotype:** Immunogen-specific rabbit IgG

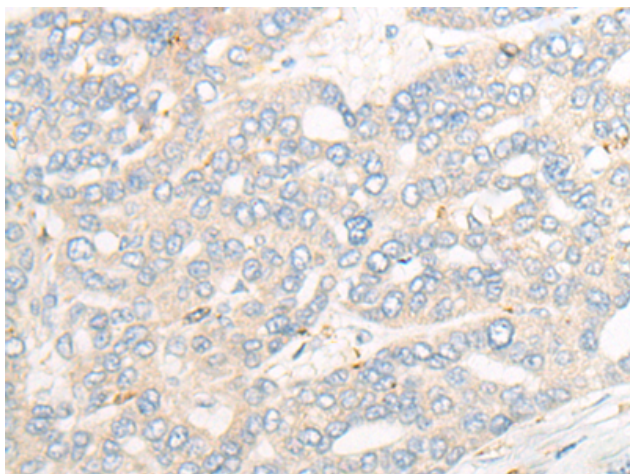
**Purification:** Antigen affinity purification

**Species Reactivity:** Human, Mouse, Rat

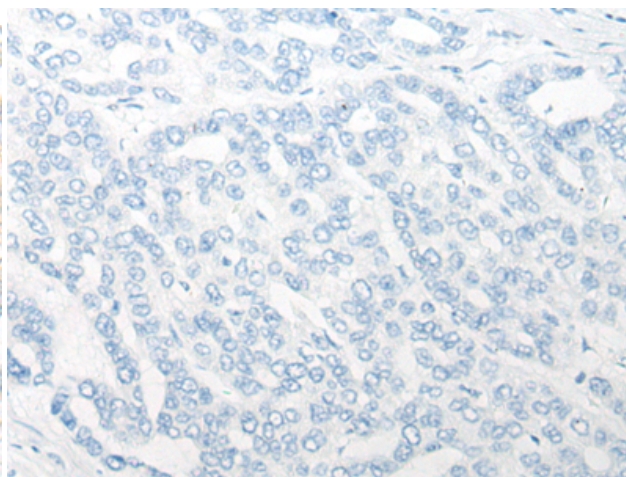
**Constituents:** PBS (without Mg<sup>2+</sup> and Ca<sup>2+</sup>), pH 7.4, 150 mM NaCl, 0.05% Sodium Azide and 40% glycerol

**Research Areas:** Signal Transduction, Neuroscience

**Storage & Shipping:** Store at -20°C. Avoid repeated freezing and thawing



Immunohistochemistry analysis of paraffin embedded Human liver cancer tissue using 218539(CORO1A Antibody) at a dilution of 1/30(Cytoplasm).



In comparison with the IHC on the left, the same paraffin-embedded Human liver cancer tissue is first treated with the fusion protein and then with 218539(Anti-CORO1A Antibody) at dilution 1/30.