

CORO2B RABBIT PAB

Cat.#: S219481

Product Name: Anti-CORO2B Rabbit Polyclonal Antibody

Synonyms: CLIPINC

UNIPROT ID: Q9UQ03 (Gene Accession - BC026335)

Background: May play a role in the reorganization of neuronal actin structure.

Immunogen: Fusion protein of human CORO2B

Applications: ELISA, IHC

Recommended Dilutions: IHC: 150-300; ELISA: 5000-10000

Host Species: Rabbit

Clonality: Rabbit Polyclonal

Isotype: Immunogen-specific rabbit IgG

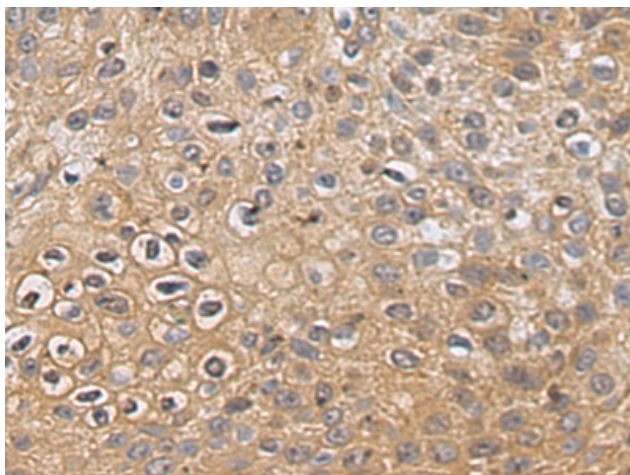
Purification: Antigen affinity purification

Species Reactivity: Human, Mouse

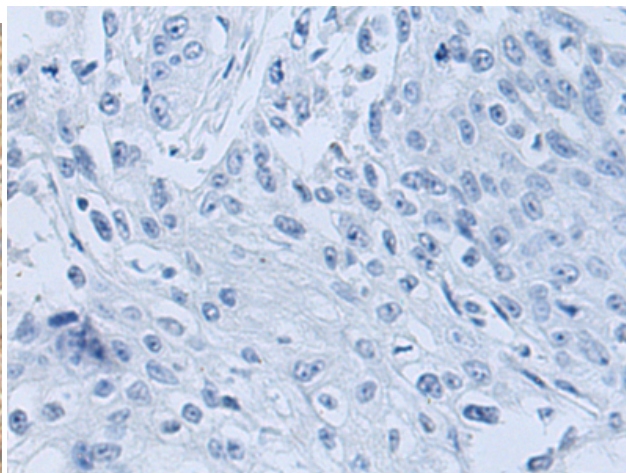
Constituents: PBS (without Mg²⁺ and Ca²⁺), pH 7.4, 150 mM NaCl, 0.05% Sodium Azide and 40% glycerol

Research Areas: Signal Transduction, Neuroscience

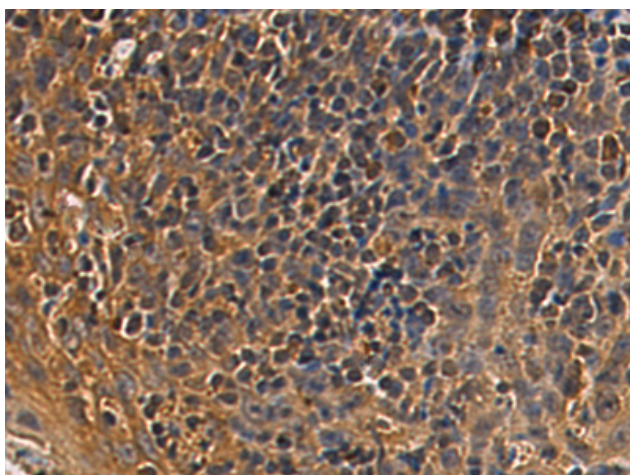
Storage & Shipping: Store at -20°C. Avoid repeated freezing and thawing



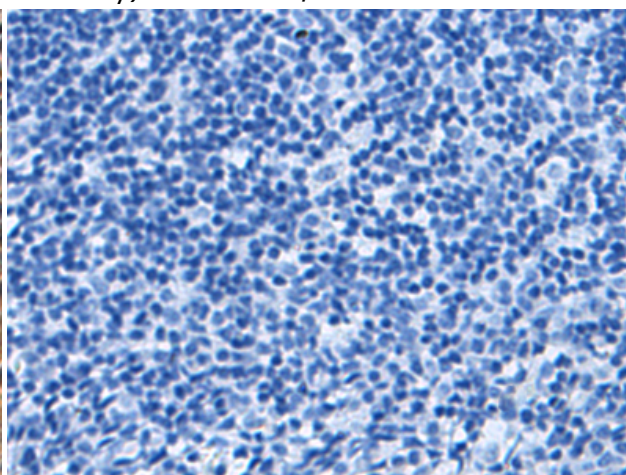
Immunohistochemistry analysis of paraffin embedded Human esophagus cancer tissue using 219481(CORO2B Antibody) at a dilution of 1/140(Cytoplasm).



In comparison with the IHC on the left, the same paraffin-embedded Human esophagus cancer tissue is first treated with the fusion protein and then with 219481(Anti-CORO2B Antibody) at dilution 1/140.



The image on the left is immunohistochemistry of paraffin-embedded Human tonsil tissue using 219481(Anti-CORO2B Antibody) at a dilution of 1/140.



In comparison with the IHC on the left, the same paraffin-embedded Human tonsil tissue is first treated with fusion protein and then with D227311(Anti-CORO2B Antibody) at dilution 1/140.