

## CORO6 RABBIT PAB

**Cat.#:** S212253

**Product Name:** Anti-CORO6 Rabbit Polyclonal Antibody

**Synonyms:**

**UNIPROT ID:** Q6QEF8 (Gene Accession - BC064514 )

**Background:** Coronin-6 also known as coronin-like protein E (Clipin-E) is a protein that in humans is encoded by the CORO6 gene. Coronin-6 belongs to coronin family which is an actin binding protein. Human CORO6 gene is located on chromosome 17 on the cytogenetic band 17p11.2. Gene CORO6 is well conserved across domain of eukaryotic organisms from animal to fungi.

**Immunogen:** Full length fusion protein

**Applications:** ELISA, IHC

**Recommended Dilutions:** IHC: 25-100; ELISA: 5000-10000

**Host Species:** Rabbit

**Clonality:** Rabbit Polyclonal

**Isotype:** Immunogen-specific rabbit IgG

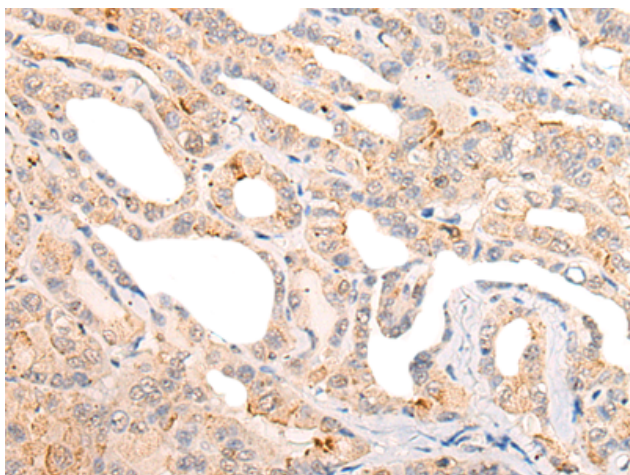
**Purification:** Antigen affinity purification

**Species Reactivity:** Human, Mouse, Rat

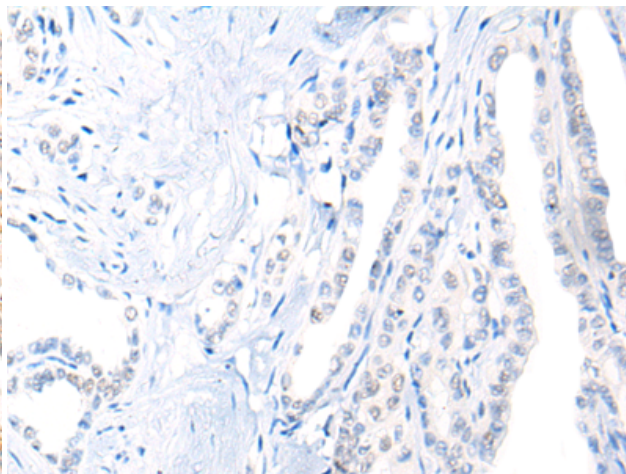
**Constituents:** PBS (without Mg<sup>2+</sup> and Ca<sup>2+</sup>), pH 7.4, 150 mM NaCl, 0.05% Sodium Azide and 40% glycerol

**Research Areas:** Signal Transduction

**Storage & Shipping:** Store at -20°C. Avoid repeated freezing and thawing



Immunohistochemistry analysis of paraffin embedded Human thyroid cancer tissue using 212253(CORO6 Antibody) at a dilution of 1/20(Cytoplasm).



In comparison with the IHC on the left, the same paraffin-embedded Human thyroid cancer tissue is first treated with the fusion protein and then with 212253(Anti-CORO6 Antibody) at dilution 1/20.