

COX16 RABBIT PAB

Cat.#: S216276

Product Name: Anti-COX16 Rabbit Polyclonal Antibody

Synonyms: hCOX16; HSPC203; C14orf112

UNIPROT ID: Q9P0S2 (Gene Accession - BC001702)

Background: Required for the assembly of the mitochondrial respiratory chain complex IV (CIV), also known as cytochrome c oxidase (PubMed:29355485, PubMed:29381136). Promotes the insertion of copper into the active site of cytochrome c oxidase subunit II (MT-CO2/COX2) (PubMed:29355485, PubMed:29381136). Interacts specifically with newly synthesized MT-CO2/COX and its copper center-forming metallochaperones SCO1, SCO2 and COA6 (PubMed:29381136). Probably facilitates MT-CO2/COX2 association with the MITRAC assembly intermediate containing MT-CO1/COX1, thereby participating in merging the MT-CO1/COX1 and MT-CO2/COX2 assembly lines (PubMed:29381136).

Immunogen: Fusion protein of human COX16

Applications: ELISA, IHC

Recommended Dilutions: IHC: 25-100; ELISA: 500-2000

Host Species: Rabbit

Clonality: Rabbit Polyclonal

Isotype: Immunogen-specific rabbit IgG

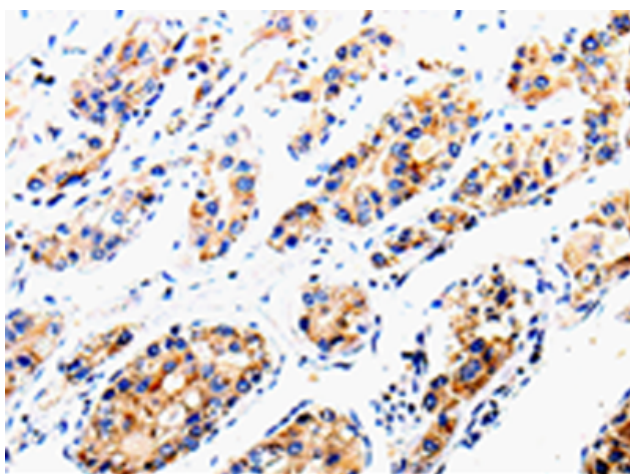
Purification: Antigen affinity purification

Species Reactivity: Human, Mouse

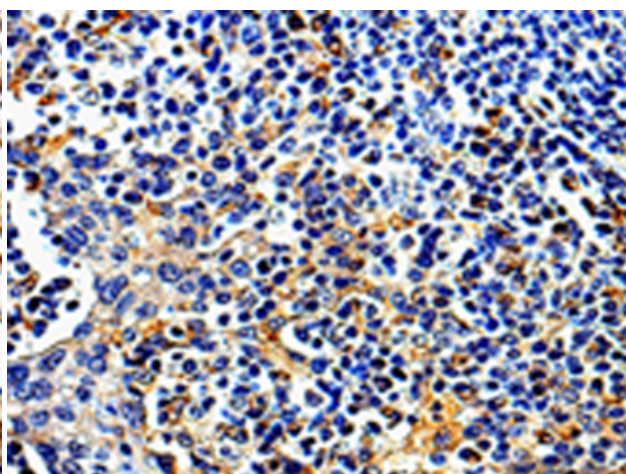
Constituents: PBS (without Mg²⁺ and Ca²⁺), pH 7.4, 150 mM NaCl, 0.05% Sodium Azide and 40% glycerol

Research Areas: Metabolism

Storage & Shipping: Store at -20°C. Avoid repeated freezing and thawing



Immunohistochemistry analysis of paraffin-embedded Human liver cancer tissue using 216276(COX16 Antibody) at a dilution of 1/50(Cytoplasm, Cell membrane).



Immunohistochemistry analysis of paraffin-embedded Human tonsil tissue using 216276(Anti-COX16 Antibody) at a dilution of 1/50.