

## COX6B1 RABBIT PAB

**Cat.#:** S216278

**Product Name:** Anti-COX6B1 Rabbit Polyclonal Antibody

**Synonyms:** COXG; COX6B; MC4DN7; COXVIb1

**UNIPROT ID:** P14854 (Gene Accession - BC001015 )

**Background:** Cytochrome c oxidase (COX), the terminal enzyme of the mitochondrial respiratory chain, catalyzes the electron transfer from reduced cytochrome c to oxygen. It is a heteromeric complex consisting of 3 catalytic subunits encoded by mitochondrial genes and multiple structural subunits encoded by nuclear genes. The mitochondrially-encoded subunits function in electron transfer, and the nuclear-encoded subunits may be involved in the regulation and assembly of the complex. This nuclear gene encodes subunit VIb. Mutations in this gene are associated with severe infantile encephalomyopathy. Three pseudogenes COX6BP-1, COX6BP-2 and COX6BP-3 have been found on chromosomes 7, 17 and 22q13.1-13.2, respectively.

**Immunogen:** Fusion protein of human COX6B1

**Applications:** ELISA, WB, IHC

**Recommended Dilutions:** IHC: 50-200;WB: 500-2000;ELISA: 5000-10000

**Host Species:** Rabbit

**Clonality:** Rabbit Polyclonal

**Isotype:** Immunogen-specific rabbit IgG

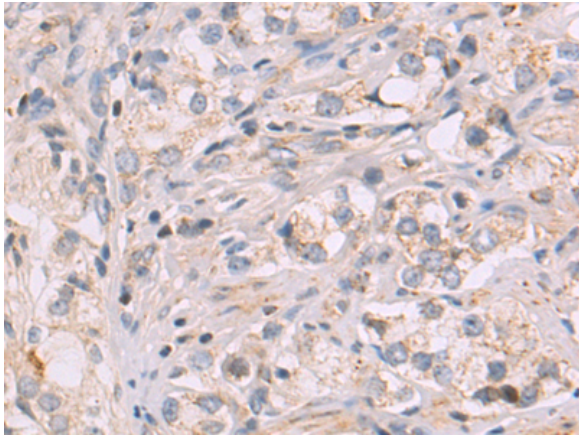
**Purification:** Antigen affinity purification

**Species Reactivity:** Human, Mouse

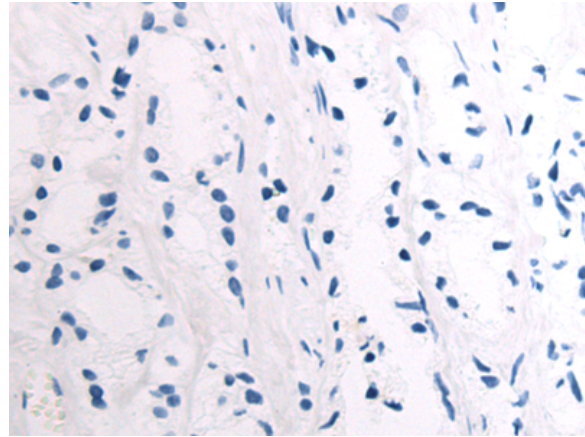
**Constituents:** PBS (without Mg<sup>2+</sup> and Ca<sup>2+</sup>), pH 7.4, 150 mM NaCl, 0.05% Sodium Azide and 40% glycerol

**Research Areas:** Metabolism, Cancer

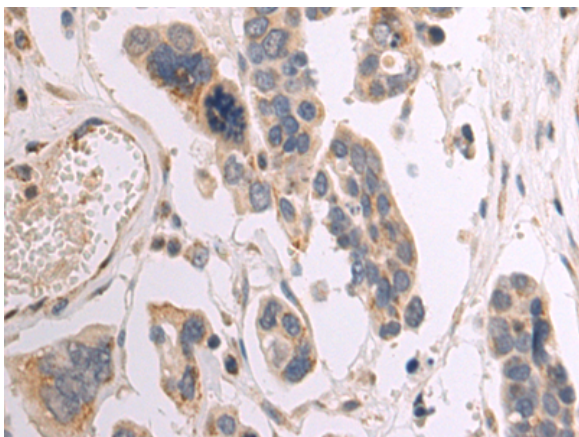
**Storage & Shipping:** Store at -20°C. Avoid repeated freezing and thawing



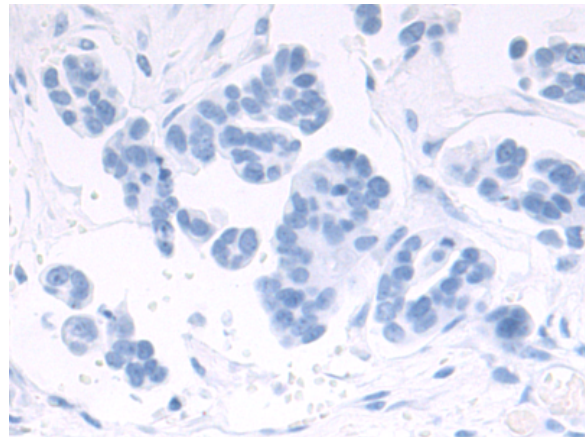
Immunohistochemistry analysis of paraffin embedded Human prostate cancer tissue using 216278(COX6B1 Antibody) at a dilution of 1/95(Cytoplasm).



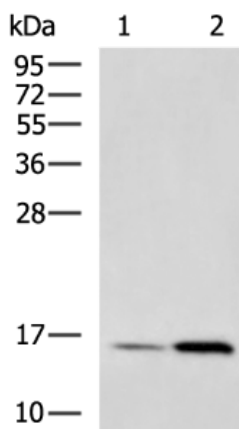
In comparison with the IHC on the left, the same paraffin-embedded Human prostate cancer tissue is first treated with the fusion protein and then with 216278(Anti-COX6B1 Antibody) at dilution 1/95.



The image on the left is immunohistochemistry of paraffin-embedded Human colorectal cancer tissue using 216278(Anti-COX6B1 Antibody) at a dilution of 1/95.



In comparison with the IHC on the left, the same paraffin-embedded Human colorectal cancer tissue is first treated with fusion protein and then with D220116(Anti-COX6B1 Antibody) at dilution 1/95.



Gel: 12%SDS-PAGE, Lysate: 40 µg;  
 Lane 1-2: LOVO and HepG2 cell lysates;  
 Primary antibody: 216278(COX6B1 Antibody) at dilution 1/1000;  
 Secondary antibody: HRP-conjugated Goat anti rabbit IgG at 1/5000 dilution;  
 Exposure time: 2 minutes



# Product Description

Pioneering GTPase and Oncogene Product Development since 2010

---