

COX7B2 RABBIT PAB

Cat.#: S216279

Product Name: Anti-COX7B2 Rabbit Polyclonal Antibody

Synonyms:

UNIPROT ID: Q8TF08 (Gene Accession - BC035923)

Background: This protein is one of the nuclear-coded polypeptide chains of cytochrome c oxidase, the terminal oxidase in mitochondrial electron transport. The COX7B2 gene encodes an 80-residue protein and has a 499-bp mRNA transcript. The COX7B2 gene contains 3 exons and maps to chromosome 4p12. For a discussion of a possible association between variation in the COX7B2 gene and susceptibility to the development of nasopharyngeal carcinoma, see NPCA1.

Immunogen: Fusion protein of human COX7B2

Applications: ELISA, IHC

Recommended Dilutions: IHC: 15-50; ELISA: 1000-2000

Host Species: Rabbit

Clonality: Rabbit Polyclonal

Isotype: Immunogen-specific rabbit IgG

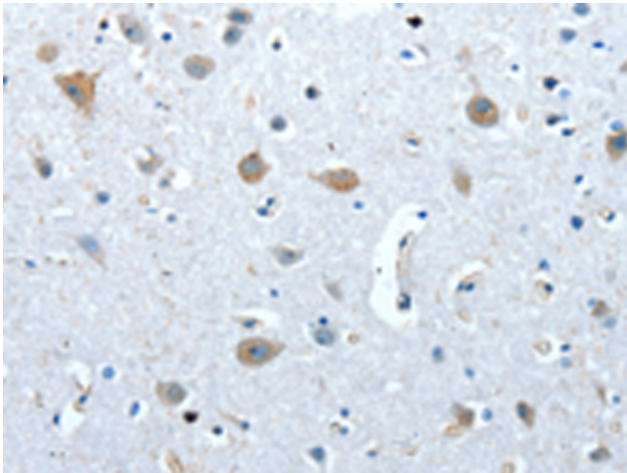
Purification: Antigen affinity purification

Species Reactivity: Human

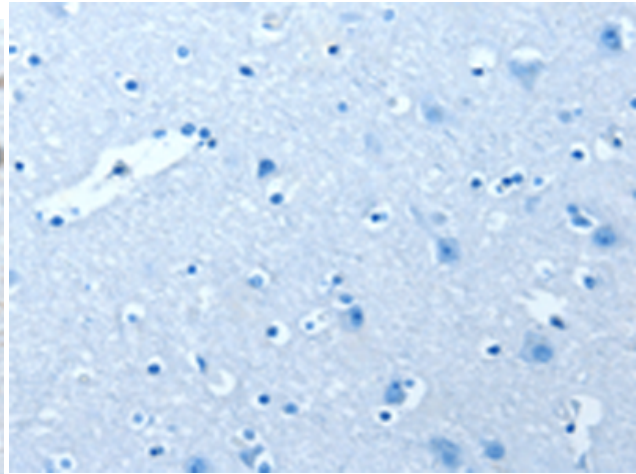
Constituents: PBS (without Mg²⁺ and Ca²⁺), pH 7.4, 150 mM NaCl, 0.05% Sodium Azide and 40% glycerol

Research Areas: Metabolism

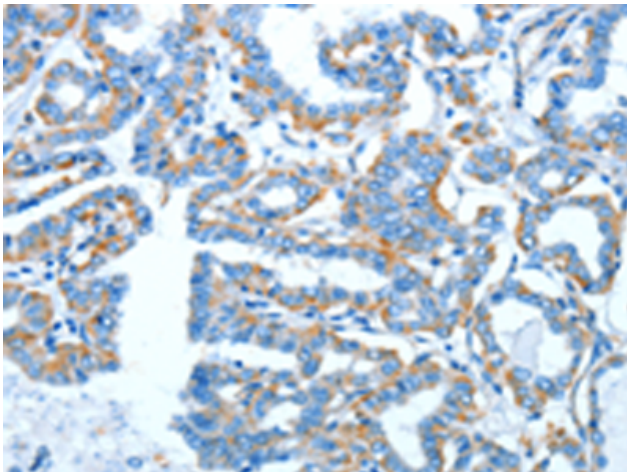
Storage & Shipping: Store at -20°C. Avoid repeated freezing and thawing



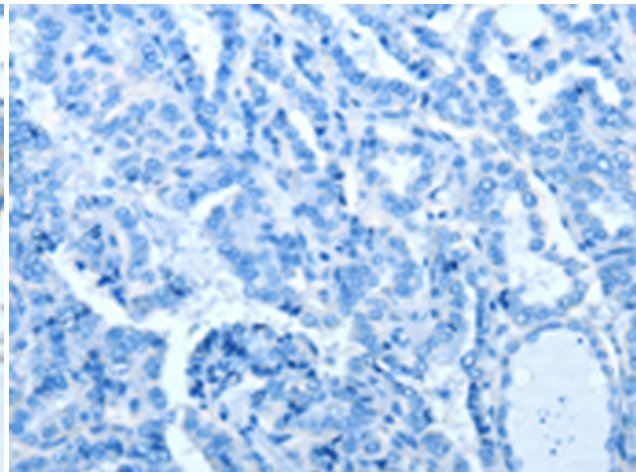
Immunohistochemistry analysis of paraffin-embedded Human brain tissue using 216279(COX7B2 Antibody) at a dilution of 1/20(Cytoplasm).



In comparison with the IHC on the left, the same paraffin-embedded Human brain tissue is first treated with the fusion protein and then with 216279(Anti-COX7B2 Antibody) at dilution 1/20.



The image on the left is immunohistochemistry of paraffin-embedded Human thyroid cancer tissue using 216279(Anti-COX7B2 Antibody) at a dilution of 1/20.



In comparison with the IHC on the left, the same paraffin-embedded Human thyroid cancer tissue is first treated with fusion protein and then with D220118(Anti-COX7B2 Antibody) at dilution 1/20.