

CPLX3 RABBIT PAB

Cat.#: S219217

Product Name: Anti-CPLX3 Rabbit Polyclonal Antibody

Synonyms: CPXIII; CPX-III; Nbla11589

UNIPROT ID: Q8WVH0 (Gene Accession - BC018026)

Background: Positively regulates a late step in synaptic vesicle exocytosis.

Immunogen: Fusion protein of human CPLX3

Applications: ELISA, IHC

Recommended Dilutions: IHC: 50-200; ELISA: 5000-10000

Host Species: Rabbit

Clonality: Rabbit Polyclonal

Isotype: Immunogen-specific rabbit IgG

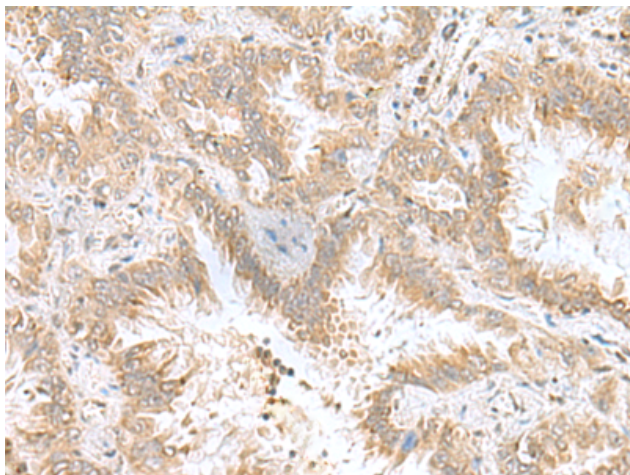
Purification: Antigen affinity purification

Species Reactivity: Human, Mouse

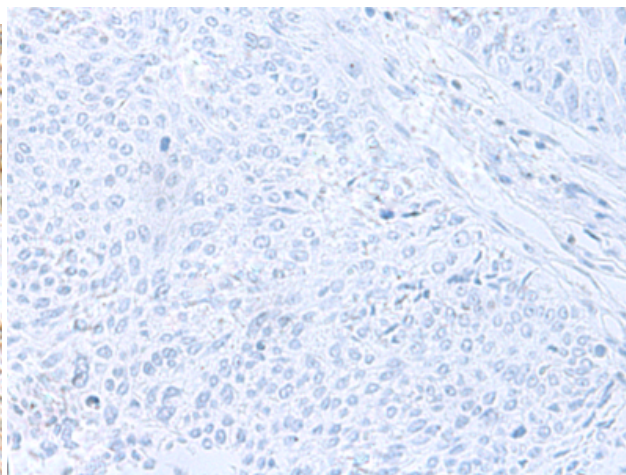
Constituents: PBS (without Mg²⁺ and Ca²⁺), pH 7.4, 150 mM NaCl, 0.05% Sodium Azide and 40% glycerol

Research Areas: Neuroscience

Storage & Shipping: Store at -20°C. Avoid repeated freezing and thawing



Immunohistochemistry analysis of paraffin embedded Human lung cancer tissue using 219217(CPLX3 Antibody) at a dilution of 1/55(Cytoplasm).



In comparison with the IHC on the left, the same paraffin-embedded Human lung cancer tissue is first treated with the fusion protein and then with 219217(Anti-CPLX3 Antibody) at dilution 1/55.