

CPN10 RABBIT MAB

Cat.#: N262061

Product Name: Anti-Cpn10 Rabbit Monoclonal Antibody

Synonyms: HSPE1; 10 kDa heat shock protein; mitochondrial; Hsp10; 10 kDa chaperonin; Chaperonin 10; CPN10; Early-pregnancy factor; EPF

UNIPROT ID: P61604

Background: Eukaryotic CPN10 homolog which is essential for mitochondrial protein biogenesis, together with CPN60. Binds to CPN60 in the presence of Mg-ATP and suppresses the ATPase activity of the latter.

Immunogen: A synthetic peptide of human Cpn10

Applications: WB,IHC-P,IP

Recommended Dilutions: WB: 1/500-1/1000 IHC: 1/50-1/100 IP: 1/20

Host Species: Rabbit

Clonality: Rabbit Monoclonal

Clone ID: R02-3K6

MW: Calculated MW: 11 kDa; Observed MW: 11 kDa

Isotype: IgG

Purification: Affinity Purified

Species Reactivity: Human,Mouse,Rat

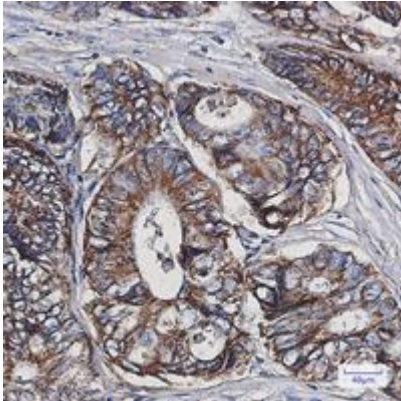
Conjugation: Unconjugated

Modification: Unmodified

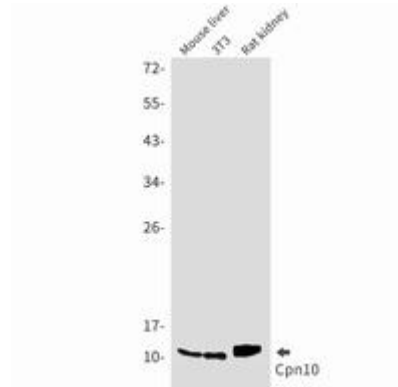
Constituents: PBS (without Mg²⁺ and Ca²⁺), pH 7.3 containing 50% glycerol, 0.5% BSA and 0.02% sodium azide

Research Areas: Signal Transduction

Storage & Shipping: Store at -20°C. Avoid repeated freezing and thawing



Immunohistochemistry analysis of paraffin-embedded Human colon cancer using Cpn10 antibody. High-pressure and temperature Sodium Citrate pH 6.0 was used for antigen retrieval.



Western blot analysis of Cpn10 in mouse liver, 3T3, rat kidney lysates using Cpn10 antibody.



Western blot analysis of Cpn10 in K562, Hela lysates using Cpn10 antibody.