

## CPNE4 RABBIT PAB

**Cat.#:** S218548

**Product Name:** Anti-CPNE4 Rabbit Polyclonal Antibody

**Synonyms:** CPN4; COPN4

**UNIPROT ID:** Q96A23 (Gene Accession - BC014396 )

**Background:** This gene belongs to the highly conserved copine family. It encodes a calcium-dependent, phospholipid-binding protein, which may be involved in membrane trafficking, mitogenesis and development. Alternative splicing results in multiple transcript variants.

**Immunogen:** Fusion protein of human CPNE4

**Applications:** ELISA, IHC

**Recommended Dilutions:** IHC: 20-100; ELISA: 5000-10000

**Host Species:** Rabbit

**Clonality:** Rabbit Polyclonal

**Isotype:** Immunogen-specific rabbit IgG

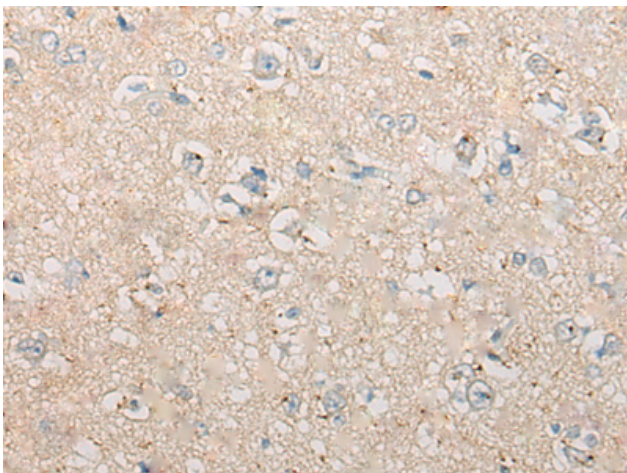
**Purification:** Antigen affinity purification

**Species Reactivity:** Human, Mouse

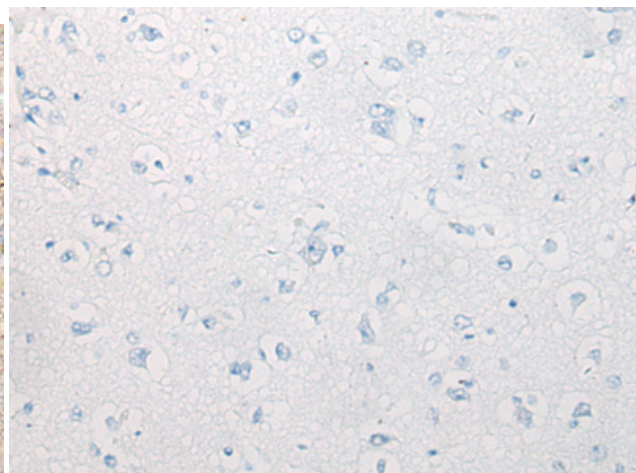
**Constituents:** PBS (without Mg<sup>2+</sup> and Ca<sup>2+</sup>), pH 7.4, 150 mM NaCl, 0.05% Sodium Azide and 40% glycerol

**Research Areas:** Signal Transduction

**Storage & Shipping:** Store at -20°C. Avoid repeated freezing and thawing



Immunohistochemistry analysis of paraffin embedded Human brain tissue using 218548(CPNE4 Antibody) at a dilution of 1/20(Cytoplasm and Cell membrane).



In comparison with the IHC on the left, the same paraffin-embedded Human brain tissue is first treated with the fusion protein and then with 218548(Anti-CPNE4 Antibody) at dilution 1/20.