

CPS1 RABBIT MAB

Cat.#: N263278

Product Name: Anti-CPS1 Rabbit Monoclonal Antibody

Synonyms: Cps1; CPSase I; CPSase I; CPSASE1; MS738

UNIPROT ID: P31327

Background: Involved in the urea cycle of ureotelic animals where the enzyme plays an important role in removing excess ammonia from the cell.

Immunogen: A synthetic peptide of human CPS1

Applications: WB,IHC-P,IP

Recommended Dilutions: WB: 1/500-1/1000 IHC: 1/50-1/100 IP: 1/20

Host Species: Rabbit

Clonality: Rabbit Monoclonal

Clone ID: R01-2A0

MW: Calculated MW: 165 kDa; Observed MW: 160 kDa

Isotype: IgG

Purification: Affinity Purified

Species Reactivity: Human

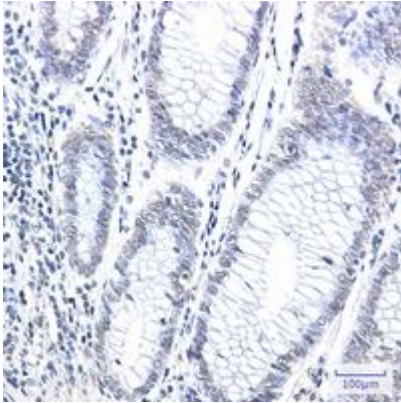
Conjugation: Unconjugated

Modification: Unmodified

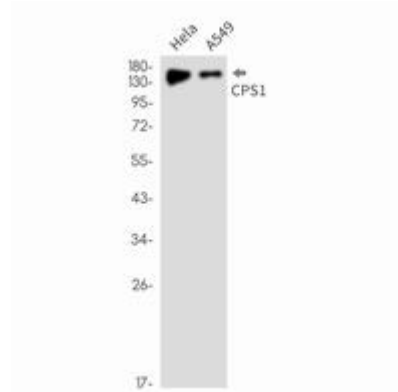
Constituents: PBS (without Mg²⁺ and Ca²⁺), pH 7.3 containing 50% glycerol, 0.5% BSA and 0.02% sodium azide

Research Areas: Tags & Cell Markers

Storage & Shipping: Store at -20°C. Avoid repeated freezing and thawing



Immunohistochemistry analysis of paraffin-embedded Human colon cancer using CPS1 antibody. High-pressure and temperature Sodium Citrate pH 6.0 was used for antigen retrieval.



Western blot analysis of CPS1 in HeLa, A549 lysates using CPS1 antibody.