

## CR1L RABBIT PAB

**Cat.#:** S221862

**Product Name:** Anti-CR1L Rabbit Polyclonal Antibody

**Synonyms:**

**UNIPROT ID:** Q2VPA4 (Gene Accession - NP\_783641)

**Background:** The C3b/C4b receptor (CR1; 120620) is important in immune complex processing. On phagocytic cells it promotes the adherence and sometimes the endocytosis of C3b- and C4b-coated particles. CR1 is composed largely of a tandemly repeated motif of approximately 60 amino acids, the short consensus repeat (SCR).

**Immunogen:** Synthetic peptide of human CR1L

**Applications:** ELISA, IHC

**Recommended Dilutions:** IHC: 20-100; ELISA: 5000-10000

**Host Species:** Rabbit

**Clonality:** Rabbit Polyclonal

**Isotype:** Immunogen-specific rabbit IgG

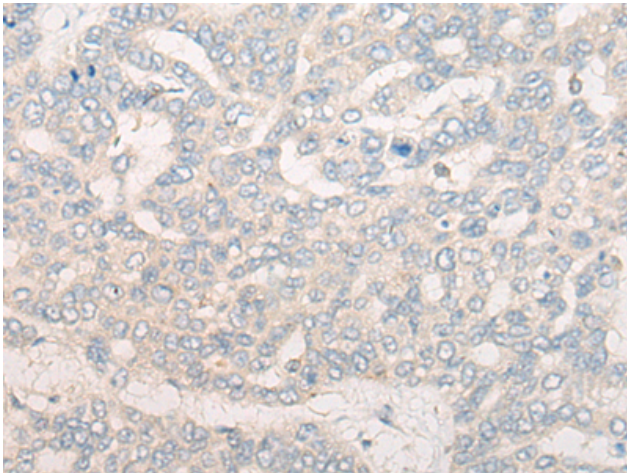
**Purification:** Antigen affinity purification

**Species Reactivity:** Human

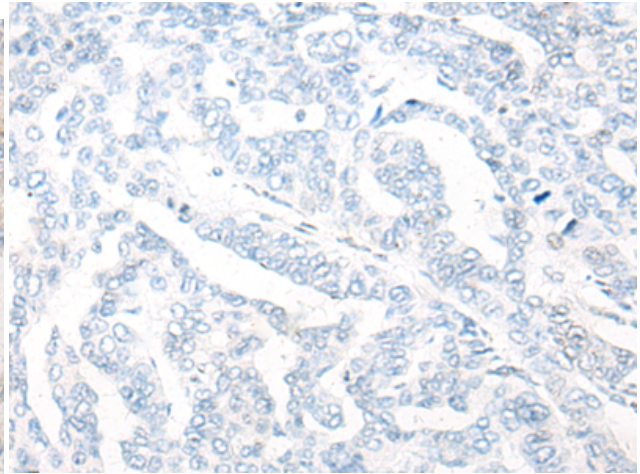
**Constituents:** PBS (without Mg<sup>2+</sup> and Ca<sup>2+</sup>), pH 7.4, 150 mM NaCl, 0.05% Sodium Azide and 40% glycerol

**Research Areas:** Cell Biology

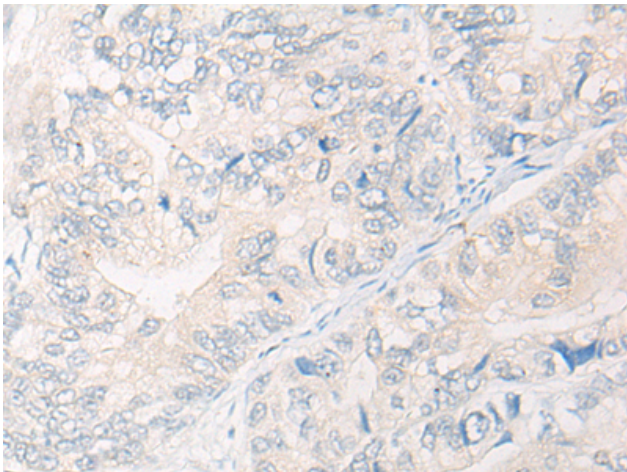
**Storage & Shipping:** Store at -20°C. Avoid repeated freezing and thawing



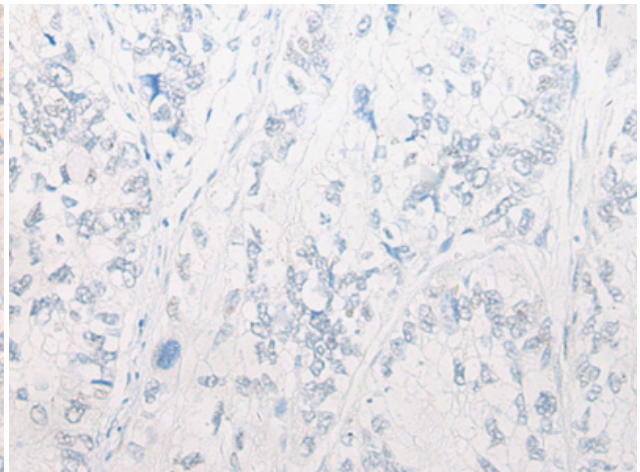
Immunohistochemistry analysis of paraffin embedded Human liver cancer tissue using 221862 (CRIL Antibody) at a dilution of 1/20 (Cytoplasm and Cell membrane).



In comparison with the IHC on the left, the same paraffin-embedded Human liver cancer tissue is first treated with the synthetic peptide and then with 221862 (Anti-CRIL Antibody) at dilution 1/20.



The image on the left is immunohistochemistry of paraffin-embedded Human gastric cancer tissue using 221862 (Anti-CRIL Antibody) at a dilution of 1/20.



In comparison with the IHC on the left, the same paraffin-embedded Human gastric cancer tissue is first treated with synthetic peptide and then with D263643 (Anti-CRIL Antibody) at dilution 1/20.