

## CRABP2 RABBIT MAB

**Cat.#:** N261588

**Product Name:** Anti-CRABP2 Rabbit Monoclonal Antibody

**Synonyms:** Cellular retinoic acid-binding protein II; CRABP-II

**UNIPROT ID:** P29373

**Background:** Transports retinoic acid to the nucleus.

**Immunogen:** Recombinant protein of human CRABP2

**Applications:** WB, ICC/IF

**Recommended Dilutions:** WB: 1/500-1/1000 IF: 1/50-1/200

**Host Species:** Rabbit

**Clonality:** Rabbit Monoclonal

**Clone ID:** R01-4C4

**MW:** Calculated MW: 16 kDa; Observed MW: 16 kDa

**Isotype:** IgG

**Purification:** Affinity Purified

**Species Reactivity:** Human

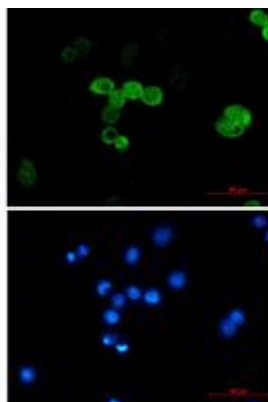
**Conjugation:** Unconjugated

**Modification:** Unmodified

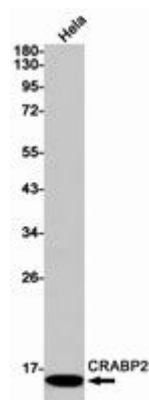
**Constituents:** PBS (without Mg<sup>2+</sup> and Ca<sup>2+</sup>), pH 7.3 containing 50% glycerol, 0.5% BSA and 0.02% sodium azide

**Research Areas:** Signal Transduction

**Storage & Shipping:** Store at -20°C. Avoid repeated freezing and thawing



Immunocytochemistry analysis of CRABP2 (green) in MCF-7 using CRABP2 antibody, and DAPI (blue)



Western blot analysis of CRABP2 in HeLa lysates using CRABP2 antibody.



# Product Description

Pioneering GTPase and Oncogene Product Development since 2010

---