

## CRB3 RABBIT PAB

**Cat.#:** S218556

**Product Name:** Anti-CRB3 Rabbit Polyclonal Antibody

**Synonyms:**

**UNIPROT ID:** Q9BUF7 (Gene Accession - BC018409 )

**Background:** This gene encodes a member of the Crumbs family of proteins. This gene is widely expressed in epithelial tissues where the encoded protein isoforms play various roles such as the control of cytokinesis and ciliogenesis or the formation of tight junctions. Alternative splicing results in multiple transcript variants encoding different isoforms.

**Immunogen:** Fusion protein of human CRB3

**Applications:** ELISA, IHC

**Recommended Dilutions:** IHC: 25-100; ELISA: 5000-10000

**Host Species:** Rabbit

**Clonality:** Rabbit Polyclonal

**Isotype:** Immunogen-specific rabbit IgG

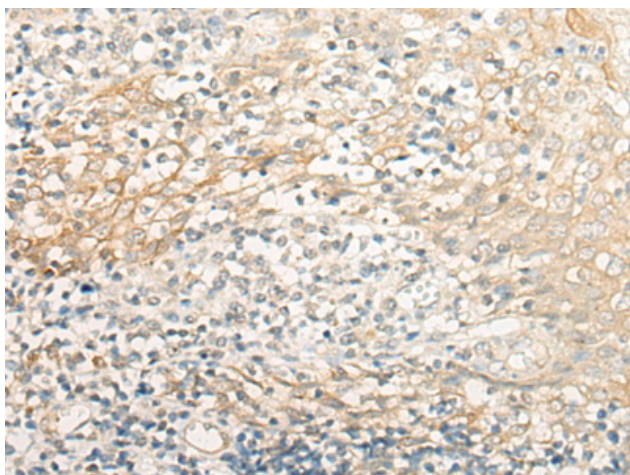
**Purification:** Antigen affinity purification

**Species Reactivity:** Human

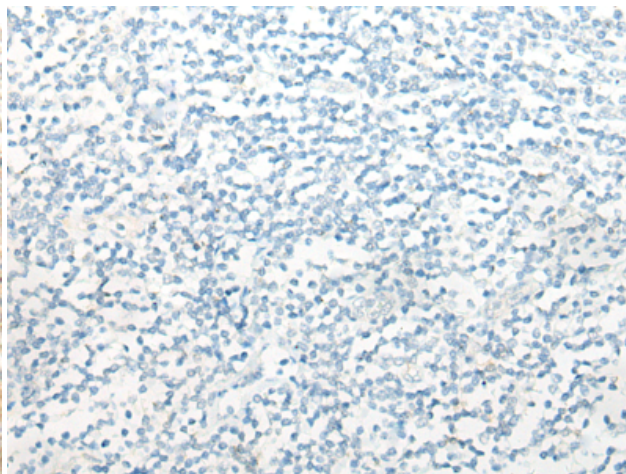
**Constituents:** PBS (without Mg<sup>2+</sup> and Ca<sup>2+</sup>), pH 7.4, 150 mM NaCl, 0.05% Sodium Azide and 40% glycerol

**Research Areas:** Signal Transduction

**Storage & Shipping:** Store at -20°C. Avoid repeated freezing and thawing



Immunohistochemistry analysis of paraffin embedded Human tonsil tissue using 218556(CRB3 Antibody) at a dilution of 1/30(Cell membrane and Cytoplasm).



In comparison with the IHC on the left, the same paraffin-embedded Human tonsil tissue is first treated with the fusion protein and then with 218556(Anti-CRB3 Antibody) at dilution 1/30.