

CRCP RABBIT PAB

Cat.#: S212272

Product Name: Anti-CRCP Rabbit Polyclonal Antibody

Synonyms: RCP; RCP9; RPC9; CGRPRCP; CGRP-RCP

UNIPROT ID: O75575 (Gene Accession - BC040107)

Background: This gene encodes a membrane protein that functions as part of a receptor complex for a small neuropeptide that increases intracellular cAMP levels. Alternate transcriptional splice variants, encoding different isoforms, have been characterized.

Immunogen: Fusion protein of human CRCP

Applications: ELISA, IHC

Recommended Dilutions: IHC: 50-200; ELISA: 5000-10000

Host Species: Rabbit

Clonality: Rabbit Polyclonal

Isotype: Immunogen-specific rabbit IgG

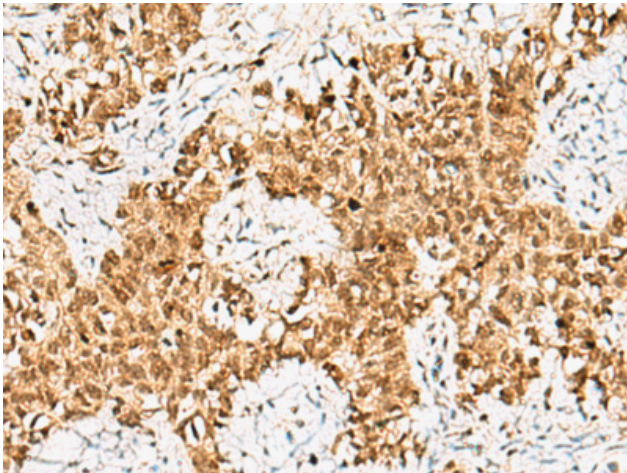
Purification: Antigen affinity purification

Species Reactivity: Human

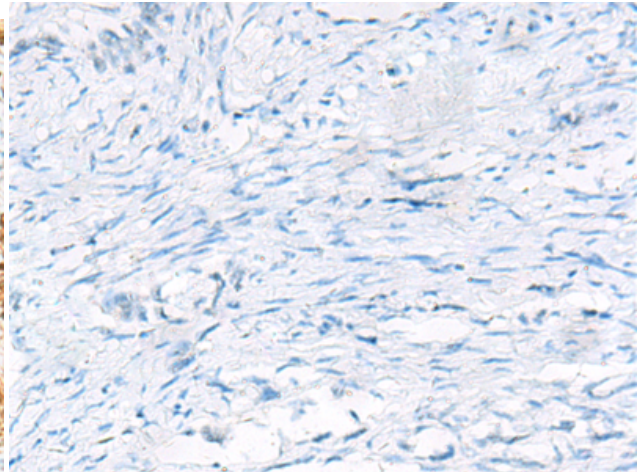
Constituents: PBS (without Mg²⁺ and Ca²⁺), pH 7.4, 150 mM NaCl, 0.05% Sodium Azide and 40% glycerol

Research Areas: Signal Transduction, Neuroscience, Cardiovascular

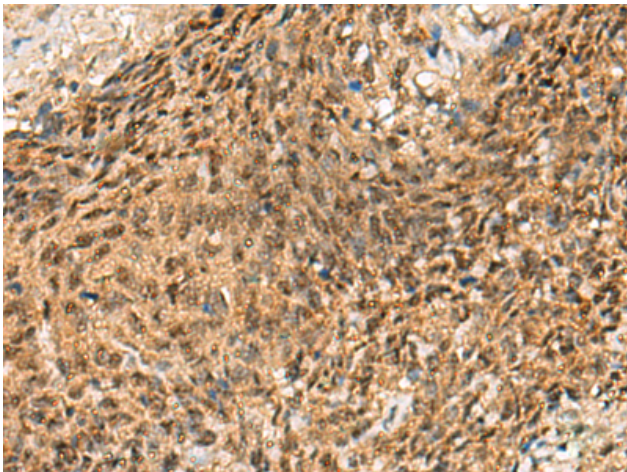
Storage & Shipping: Store at -20°C. Avoid repeated freezing and thawing



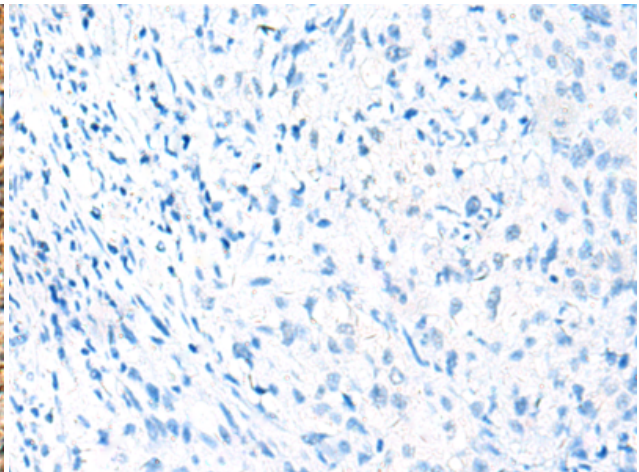
Immunohistochemistry analysis of paraffin embedded Human ovarian cancer tissue using 212272(CRCP Antibody) at a dilution of 1/65(Cytoplasm and Nucleus).



In comparison with the IHC on the left, the same paraffin-embedded Human ovarian cancer tissue is first treated with the fusion protein and then with 212272(Anti-CRCP Antibody) at dilution 1/65.



The image on the left is immunohistochemistry of paraffin-embedded Human cervical cancer tissue using 212272(Anti-CRCP Antibody) at a dilution of 1/65.



In comparison with the IHC on the left, the same paraffin-embedded Human cervical cancer tissue is first treated with fusion protein and then with D124678(Anti-CRCP Antibody) at dilution 1/65.