

CREATINE KINASE B TYPE RABBIT MAB

Cat.#: N262064

Product Name: Anti-Creatine Kinase B type Rabbit Monoclonal Antibody

Synonyms: BCK; Ckb; CKBB; HEL 211; HEL S 29

UNIPROT ID: P12277

Background: Reversibly catalyzes the transfer of phosphate between ATP and various phosphogens (e.g. creatine phosphate). Creatine kinase isoenzymes play a central role in energy transduction in tissues with large, fluctuating energy demands, such as skeletal muscle, heart, brain and spermatozoa.

Immunogen: A synthetic peptide of human Creatine kinase B type

Applications: WB,IHC-P

Recommended Dilutions: WB: 1/500-1/1000 IHC: 1/50-1/100

Host Species: Rabbit

Clonality: Rabbit Monoclonal

Clone ID: R03-4C1

MW: Calculated MW: 43 kDa; Observed MW: 43 kDa

Isotype: IgG

Purification: Affinity Purified

Species Reactivity: Human,Mouse,Rat

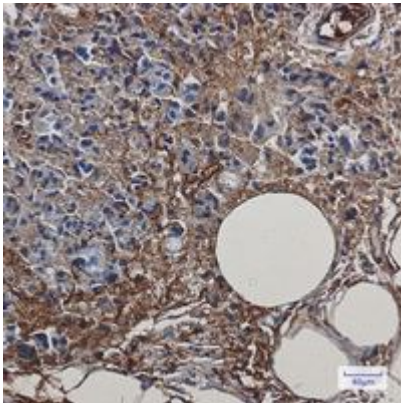
Conjugation: Unconjugated

Modification: Unmodified

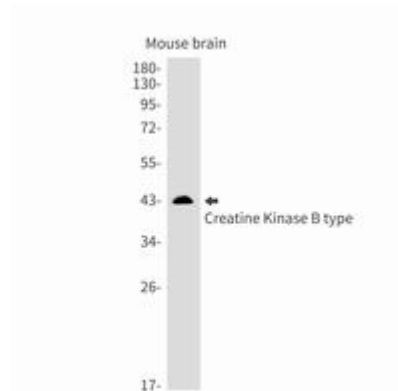
Constituents: PBS (without Mg²⁺ and Ca²⁺), pH 7.3 containing 50% glycerol, 0.5% BSA and 0.02% sodium azide

Research Areas: Neuroscience

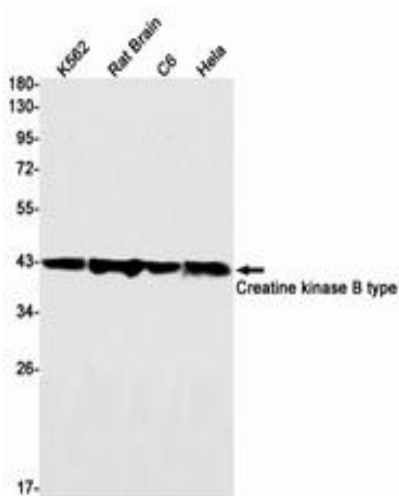
Storage & Shipping: Store at -20°C. Avoid repeated freezing and thawing



Immunohistochemistry analysis of paraffin-embedded Human breast cancer using Creatine kinase B type antibody. High-pressure and temperature Sodium Citrate pH 6.0 was used for antigen retrieval.



Western blot analysis of Creatine Kinase B type in mouse brain lysates using Creatine Kinase B type antibody.



Western blot analysis of Creatine kinase B type in K562, rat Brain, C6, HeLa lysates using Creatine kinase B type antibody.