

## CRKL RABBIT MAB

**Cat.#:** N263281

**Product Name:** Anti-Crkl Rabbit Monoclonal Antibody

**Synonyms:** Crk L; Crk like protein; Crkl; Crkol

**UNIPROT ID:** P46109

**Background:** May mediate the transduction of intracellular signals.

**Immunogen:** A synthetic peptide of human Crkl

**Applications:** WB, ICC/IF

**Recommended Dilutions:** WB: 1/500-1/1000 IF: 1/50-1/200

**Host Species:** Rabbit

**Clonality:** Rabbit Monoclonal

**Clone ID:** R02-3D8

**MW:** Calculated MW: 34 kDa; Observed MW: 39 kDa

**Isotype:** IgG

**Purification:** Affinity Purified

**Species Reactivity:** Human

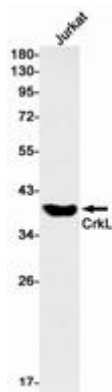
**Conjugation:** Unconjugated

**Modification:** Unmodified

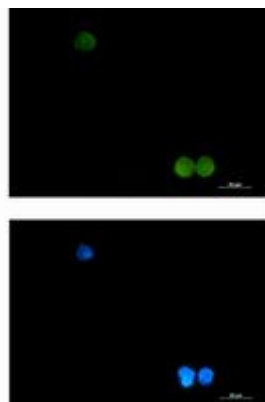
**Constituents:** PBS (without Mg<sup>2+</sup> and Ca<sup>2+</sup>), pH 7.3 containing 50% glycerol, 0.5% BSA and 0.02% sodium azide

**Research Areas:** Neuroscience

**Storage & Shipping:** Store at -20°C. Avoid repeated freezing and thawing



Western blot analysis of Crkl in Jurkat lysates using Crkl antibody.



Immunocytochemistry analysis of Crkl (green) in K562 using Crkl antibody, and DAPI (blue).



# Product Description

Pioneering GTPase and Oncogene Product Development since 2010

---