

CRM1 RABBIT MAB

Cat.#: N262068

Product Name: Anti-CRM1 Rabbit Monoclonal Antibody

Synonyms: XPO1; CRM1; Exportin-1; Exp1; Chromosome region maintenance 1 protein homolog

UNIPROT ID: O14980

Background: Mediates the nuclear export of cellular proteins (cargos) bearing a leucine-rich nuclear export signal (NES) and of RNAs. In the nucleus, in association with RANBP3, binds cooperatively to the NES on its target protein and to the GTPase RAN in its active GTP-bound form (Ran-GTP). Docking of this complex to the nuclear pore complex (NPC) is mediated through binding to nucleoporins.

Immunogen: A synthetic peptide of human CRM1

Applications: WB, ICC/IF

Recommended Dilutions: WB: 1/500-1/1000 IF: 1/50-1/200

Host Species: Rabbit

Clonality: Rabbit Monoclonal

Clone ID: R03-4G6

MW: Calculated MW: 123 kDa; Observed MW: 123 kDa

Isotype: IgG

Purification: Affinity Purified

Species Reactivity: Human, Rat

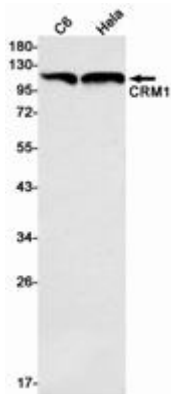
Conjugation: Unconjugated

Modification: Unmodified

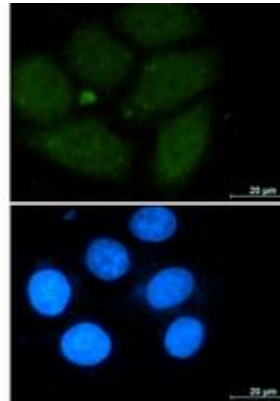
Constituents: PBS (without Mg²⁺ and Ca²⁺), pH 7.3 containing 50% glycerol, 0.5% BSA and 0.02% sodium azide

Research Areas: Signal Transduction

Storage & Shipping: Store at -20°C. Avoid repeated freezing and thawing



Western blot analysis of CRM1 in C6, HeLa lysates using CRM1 antibody.



Immunocytochemistry analysis of CRM1 (green) in A549 using CRM1 antibody, and DAPI (blue).