

CSDE1 RABBIT MAB

Cat.#: N263283

Product Name: Anti-CSDE1 Rabbit Monoclonal Antibody

Synonyms: UNR; DIS155E

UNIPROT ID: O75534

Background: RNA-binding protein involved in translationally coupled mRNA turnover.

Immunogen: A synthetic peptide of human CSDE1/NRU

Applications: WB,IP

Recommended Dilutions: WB: 1/500-1/1000 IP: 1/20

Host Species: Rabbit

Clonality: Rabbit Monoclonal

Clone ID: R03-1A3

MW: Calculated MW: 89 kDa; Observed MW: 89 kDa

Isotype: IgG

Purification: Affinity Purified

Species Reactivity: Human

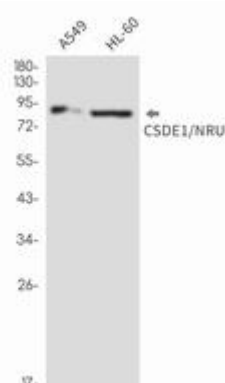
Conjugation: Unconjugated

Modification: Unmodified

Constituents: PBS (without Mg²⁺ and Ca²⁺), pH 7.3 containing 50% glycerol, 0.5% BSA and 0.02% sodium azide

Research Areas: Epigenetics and Nuclear Signaling

Storage & Shipping: Store at -20°C. Avoid repeated freezing and thawing



Western blot analysis of CSDE1/NRU in A549, HL-60 lysates using CSDE1 antibody.



Product Description

Pioneering GTPase and Oncogene Product Development since 2010
