

## CSF3R RABBIT PAB

**Cat.#:** S219817

**Product Name:** Anti-CSF3R Rabbit Polyclonal Antibody

**Synonyms:** CD114, GCSFR

**UNIPROT ID:** Q99062 (Gene Accession - NP\_000751 )

**Background:** The protein encoded by this gene is the receptor for colony stimulating factor 3, a cytokine that controls the production, differentiation, and function of granulocytes. The encoded protein, which is a member of the family of cytokine receptors, may also function in some cell surface adhesion or recognition processes. Alternatively spliced transcript variants have been described. Mutations in this gene are a cause of Kostmann syndrome, also known as severe congenital neutropenia.

**Immunogen:** Synthetic peptide of human CSF3R

**Applications:** ELISA, IHC

**Recommended Dilutions:** IHC: 15–50; ELISA: 1000–2000

**Host Species:** Rabbit

**Clonality:** Rabbit Polyclonal

**Isotype:** Immunogen-specific rabbit IgG

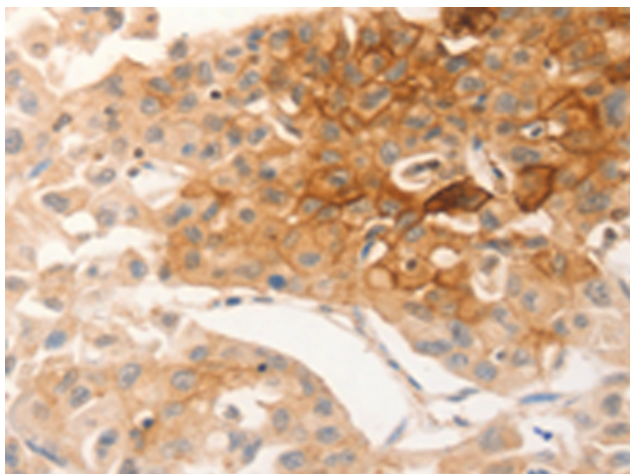
**Purification:** Antigen affinity purification

**Species Reactivity:** Human

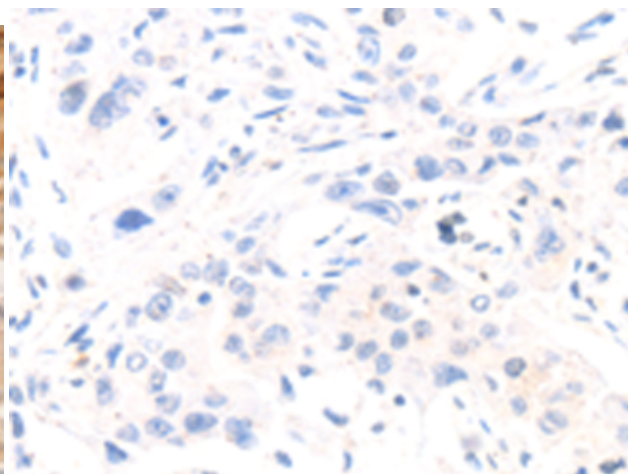
**Constituents:** PBS (without Mg<sup>2+</sup> and Ca<sup>2+</sup>), pH 7.4, 150 mM NaCl, 0.05% Sodium Azide and 40% glycerol

**Research Areas:** Cancer, Immunology, Stem Cells

**Storage & Shipping:** Store at -20°C. Avoid repeated freezing and thawing



Immunohistochemistry analysis of paraffin embedded Human lung cancer tissue using 219817(CSF3R Antibody) at a dilution of 1/12(Cytoplasm, Cell membrane).



In comparison with the IHC on the left, the same paraffin-embedded Human lung cancer tissue is first treated with the synthetic peptide and then with 219817(Anti-CSF3R Antibody) at dilution 1/12.