

CSH1 RABBIT PAB

Cat.#: S217512

Product Name: Anti-CSH1 Rabbit Polyclonal Antibody

Synonyms: PL; CSA; CS-1; CSMT; hCS-1; hCS-A

UNIPROT ID: P0DML2 (Gene Accession - BC005921)

Background: The protein encoded by this gene is a member of the somatotropin/prolactin family of hormones and plays an important role in growth control. The gene is located at the growth hormone locus on chromosome 17 along with four other related genes in the same transcriptional orientation; an arrangement which is thought to have evolved by a series of gene duplications. Although the five genes share a remarkably high degree of sequence identity, they are expressed selectively in different tissues. Alternative splicing generates additional isoforms of each of the five growth hormones, leading to further diversity and potential for specialization.

Immunogen: Fusion protein of human CSH1

Applications: ELISA, WB, IHC

Recommended Dilutions: IHC: 50-200;WB: 500-2000;ELISA: 2000-5000

Host Species: Rabbit

Clonality: Rabbit Polyclonal

Isotype: Immunogen-specific rabbit IgG

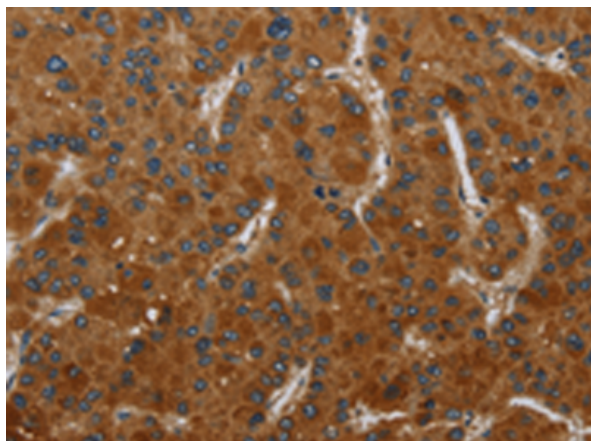
Purification: Antigen affinity purification

Species Reactivity: Human

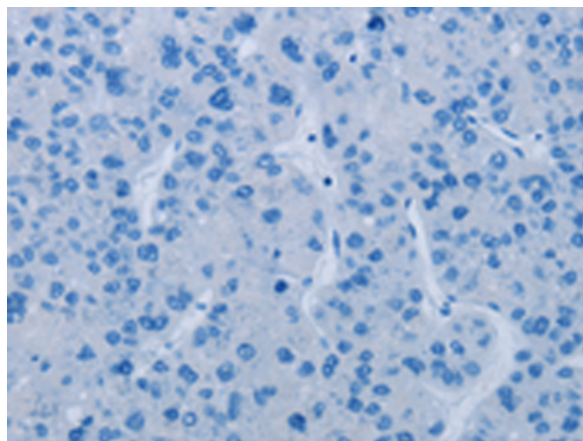
Constituents: PBS (without Mg²⁺ and Ca²⁺), pH 7.4, 150 mM NaCl, 0.05% Sodium Azide and 40% glycerol

Research Areas: Signal Transduction

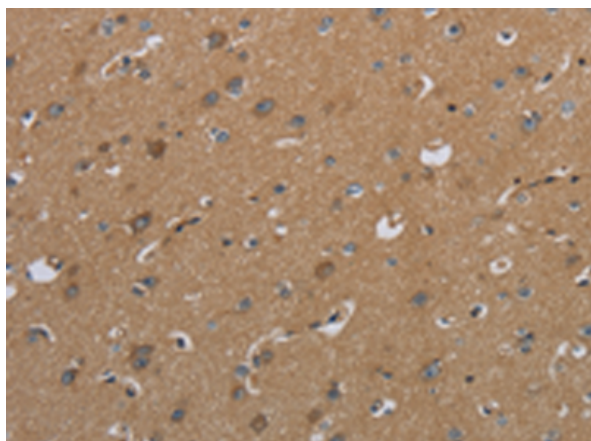
Storage & Shipping: Store at -20°C. Avoid repeated freezing and thawing



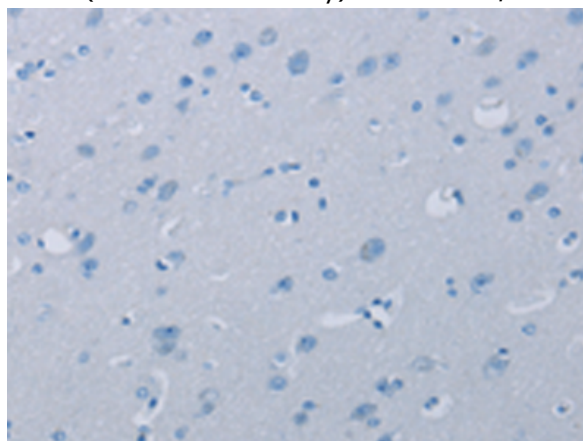
Immunohistochemistry analysis of paraffin embedded Human liver cancer tissue using 217512(CSH1 Antibody) at a dilution of 1/50(Cytoplasm).



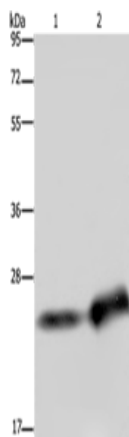
In comparison with the IHC on the left, the same paraffin-embedded Human liver cancer tissue is first treated with the fusion protein and then with 217512(Anti-CSH1 Antibody) at dilution 1/50.



The image on the left is immunohistochemistry of paraffin-embedded Human brain tissue using 217512(Anti-CSH1 Antibody) at a dilution of 1/50.



In comparison with the IHC on the left, the same paraffin-embedded Human brain tissue is first treated with fusion protein and then with D222496(Anti-CSH1 Antibody) at dilution 1/50.



Gel: 10%SDS-PAGE, Lysate: 40 µg;
 Lane 1-2: Human breast infiltrative duct tissue,
 Human placenta tissue;
 Primary antibody: 217512(CSH1 Antibody) at
 dilution 1/300;
 Secondary antibody: Goat anti rabbit IgG at
 1/8000 dilution;
 Exposure time: 10 seconds



Product Description

Pioneering GTPase and Oncogene Product Development since 2010
