

## CSHL1 RABBIT MAB

**Cat.#:** N262070

**Product Name:** Anti-CSHL1 Rabbit Monoclonal Antibody

**Synonyms:** Lactogen-like; Chorionic somatomammotropin-like

**UNIPROT ID:** Q14406

**Background:** May be a novel gestational hormone required to compensate for absence of other members of the GH/CS cluster during gestation.

**Immunogen:** Recombinant protein of human CSHL1

**Applications:** WB,IHC-P

**Recommended Dilutions:** WB: 1/500-1/1000 IHC: 1/50-1/100

**Host Species:** Rabbit

**Clonality:** Rabbit Monoclonal

**Clone ID:** R06-9I3

**MW:** Calculated MW: 25 kDa; Observed MW: 25 kDa

**Isotype:** IgG

**Purification:** Affinity Purified

**Species Reactivity:** Human

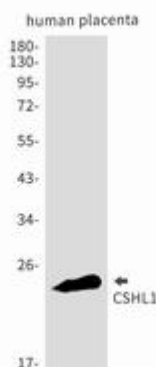
**Conjugation:** Unconjugated

**Modification:** Unmodified

**Constituents:** PBS (without Mg<sup>2+</sup> and Ca<sup>2+</sup>), pH 7.3 containing 50% glycerol, 0.5% BSA and 0.02% sodium azide

**Research Areas:** Signal Transduction

**Storage & Shipping:** Store at -20°C. Avoid repeated freezing and thawing



Western blot analysis of CSHL1 in Human placenta lysates using CSHL1 antibody.



# Product Description

Pioneering GTPase and Oncogene Product Development since 2010

---